



## PRODUCT CATALOG 2019-2020



# MZIK

## AUTOMOTIVE INDUSTRY

- CLUTCHS ACTUATORS
- FORKS OF CLUTCH
- FORKS FOR GEAR SHIFT
- HOUSING FOR CLUTCHS
- SHAFT AND CLUTCH FORKS
- REPAIR SET, FORK CLUTCS
- HOUSING SET AND BEARING (PLATEAU)

[www.mzkrolamentos.com.br](http://www.mzkrolamentos.com.br)

[exportacao@mzkrolamentos.com.br](mailto:exportacao@mzkrolamentos.com.br)

Phone: +55 16 3969-8877



# AUTOMOTIVE INDUSTRY

CLUTCH HOUSINGS | FORKS FOR GEAR SHIFT AND CLUTCH | PLATEAU SETS AND ACTUATORS

## MZK BEARING INDUSTRY



## CATALOG NOMENCLATURE - PRICE LIST

- AC - COMPLETE HOUSING AUTO CENTERING
- TB - HOUSING COMPLETE WITH RADIAL CONT. (TUBULAR)
- RCS - BEARING WITHOUT HOUSING
- RCL - COMPLETE HOUSING FOR UTILITY VEHICLES
- RCH - COMPLETE HOUSING FOR HEAVY LINE
- RCY - HYDRAULIC ACTUATORS HEAVY LINE AND UTILITY VEHICLES
- SM - COMPLETE HOUSING
- KTA - CLUTCH HOUSING SETS
- KTG - CLUTCH FORKS SETS
- EXG - SHAFT CLUTCH FORK
- GDL - CLUTCH FORKS
- GCL - FORKS OF GEAR SHIFT STEEL INSERT
- PGC - TABLE (STEEL)

**BEARINGS: TB = BEARINGS TUBULAR RADIAL CONTACT**

OTHER BEARINGS IN FORGED STEEL OF ANGULAR CONTACT.

**FORKS: FORGED STEEL, MACHINED WITH INDUCTION TREATMENT.**



## EQUIVALENCE TABLE

AGRALE	NWO	SACHS	EATON	ORIGINAL	PG
RCH 5010			1271010		7
RSC 5019	RDS 1009			6003 033 035 001	7
RCL 5035	RDS 1035	3367	125802	6003 033 035 001	7
RCH 5040		3040	125919	2PO141105	7
RCH 5303	RDL 1303			6013 033 035 001	7
RCH 5347	RDL 1428	3347	125783	6020 003 016 005	8
RCH 5360AC	RDL 1360AC	3359			8
RCH 5365	RDL 1365	3380	125790	6007 0030 48005	8
RCH 5399	RDL 1431	3399		6025 0030 25005	8
RCH 5400AC		3400	125910		8
RCH 5563			125563 / 125715		9

CBT	NWO	SACHS	EATON	ORIGINAL	PG
RCS 5015	RDS 1015			000 0602 021	9

CHRYSLER	NWO	SACHS	EATON	ORIGINAL	PG
RCS 9009	RDS 1009	3367		AL 2116 T	9
RCH 5323	RDL 1323	3320	125800		9

FORD	NWO	SACHS	EATON	ORIGINAL	PG
RCS 5009	RDS 1009	3367		02987123	10
RSC 5016	RDS 1016			3 585 341	10
RCH 5010			1271010	F 817 A 548 AC	10
RCH 5029			1271029	F 817 7548 AC	10
RCL 5035	RDS 1035	3367	125802	82 TU 7548 A	10
RCL 5037	RDL 1037	3373		29K 141 165	11
RCL 5038	RDL 1038	3387	125801	2 SL 141165	11
RCH 5040		3040	125919	2ZD 141165	11
RCH 5348 SM	RDL 1348	3358		2Z 0141707 A	11
RCH 5349 SM	RDL 1349	3386		E 3HN 7580 AA	11
RCH 5350	RDL 1350			BG 1X 7561 AA	12
RCH 5360 SM	RDL 1360 SM	3348	125582	BF 6X7A005 A	12
RCH 5360 AC	RDL 1360 AC	3359		BF 7X7A005 A	12
RCH 5360	RDL 1360	3359		BF 7X7A005 A	12
RCH 5421 AC		3100 / 3431	125755	457548-AB	12
RCH 5629 AC		3100 / 3431	125755	457548-AB	13
RCH5502 SM			125562		13
RCH 5563			125563		13
RCH 5650 SM			125650		13
RCH 5713			125713		13
RCH 5716			125716		14
RCH 5717SM			125717		14

GM	NWO	SACHS	EATON	ORIGINAL	PG
RCL 5035	RDS 1035	3367	125802	94 009 404	14
RDL 5036	RDL 1036			94 009 404	14
RCL 5081	RDL 1081			9302934	14

GM	NWO	SACHS	EATON	ORIGINAL	PG
RCH 5360AC	RDL 1360AC	3359			15
RCH 5563			125583		15

IVECO	NWO	SACHS	EATON	ORIGINAL	PG
RCH 5320 AC	RDL 1320	3325		7168964	15
RCH 5323	RDL 1326	3362	125800	7145819	15
RCH 5336 AC	RDL 1366	3369	125652	1900756	15
RCH 5360 AC	RDL 1360 AC				16
RCH 5391 AC	RDL 1360AC	3391		50310133	16
RCH 5399		3399			16
RCH 5400AC		3400	125910	5945890688	16
RCH 5401		3401			16
RCH 5498AC		3398			17

JOHN DEERE	NWO	SACHS	EATON	ORIGINAL	PG
RCS 5009	RDS 1009	3367		AL 2216 T	17

MASSEY	NWO	SACHS	EATON	ORIGINAL	PG
RCS 5016	RDL 1016			3585311 M1	17

MERCEDES	NWO	SACHS	EATON	ORIGINAL	PG
RCS 5007	RDS 1007			000 254 0020	17
RCH 5020	RDL 1020	3384		320 250 0015	18
RCS 5020	RDS 1020	3384		320 250 00 15	18
RCH 5021	RDL 1021	3385		335 254 00 10	18
RCS 5021	RDS 1021	3385		335 254 00 10	18
RCH 5300	RDL 1300	3358		321 250 05 15	18
RCH 5305	RDL 1305	3324		000 250 42 15	19
RCH 5305 TB	RDL 1305	3324		000 250 42 15	19
RCH 5306	RDL 1306	3330		001 250 03 15	19
RCH 5307	RDL 1307	3327		000 250 18 15	19
RCH 5308	RDL 1308	3310		000 250 17 15	19
RCH 5308 TB	RDL 1308	3310		000 250 17 15	20
RCH 5311	RDL 1311	3329		000 250 76 15	20
RCH 5312	RDL 1312			340 250 02 10	20
RCH 5320 AC	RDL 1320	3325	125807	001 250 22 15	20
RCH 5321AC	RDL 1321	3345	125953	001 250 02 15	20
RCH 5324AC	RDL 1324	3383		001 250 07 15	21
RCH 5326	RDL 1326	3326		001 250 05 15	21
RCH 5328	RDL 1328			000 250 7015	21
RCH 5331	RDL 1331			001 250 08 15	21
RCH 5332 AC	RDL 1332	3345	125653	001 250 05 15	21
RCH 5337	RDL 1337	3337 / 3338		001 250 04 15	22
RCH 5338AC	RDL 1338			001 250 06 15	22
RCH 5356 AC	RDL 1356	3377	125634 / 125635	002 250 41 15	22
RCH 5378 AC	RDL 1378	3388		001 250 06 15	22
RCH 5390 AC	RDL 1424	3390	125946	002 250 63 15	22
RCH 5307 AC	RDL 1397	3309	125806	001 250 09 15	23
RCH 5635			125635		23
RCH 5654			125654		23

ACTUATOR	NWO	SACHS	EATON	ORIGINAL	PG
RCY 7843	RDL 1375	3361		002 250 06 15	23
RCY 7844				002 255 25 08	23

SCANIA	NWO	SACHS	EATON	ORIGINAL	PG
RCS 5015	RDS 1015			133011 / 215131	24

SCANIA	NWO	SACHS	EATON	ORIGINAL	PG
RCH5314 AC	RDL 1314	3353		1.386.100	24
RCH5329 AC	RDL 1329	3352	125708	1.319.344	24
RCH 5372	RDL 1372	3075 / 3375		352750 / 1.387.604	24
RCH 5422 AC	RDL 1422	3350	125709	1.728.165 / 1.409.770	24
RCH 5522 AC				1493090	25
RCH 5522				1493090	25
RCH 5722 AC				VALEO 830010	25

TOYOTA	NWO	SACHS	EATON	ORIGINAL	PG
RCS 5007	RDS 1007			900236301	25
RCL 5007	RDL 1007			900236301	25

VALTRA	NWO	SACHS	EATON	ORIGINAL	PG
RCS 5019	RDS 1019			164480 / 164481	25
RCH 5200	RDL 1600			617 81200	26

VOLVO	NWO	SACHS	EATON	ORIGINAL	PG
RCH 5315	RDL 1315	3355		1655289 / 166833	26
RCH 5316	RDL 1316	3368		287156	26
RCH 5317	RDL 1317	3374		1655287	26
RCH 5318	RDL 1318	3372		1655288	26
RCH 5319	RCH 1319	3000 / 3380		1672944 / 1655843	27
RCH 5322	RDL 1322	3386		1527695	27
RCH 5325	RDL 1325	3383	125637	1655825	27
RCH 5352	RDL 1352	3385		1668030 / 1608938	27
RCH 5360 AC	RDL 1360 AC	3359			27
RCH 5394	RDL 1394	3308	125643	1672064	28
RCH 5396 AC	RDL 1396		125641	20722523	28
RCH 5583			125563 / 125715		28
RCH 5567		KIT 6295			28
RCH 5655			125655		28
RCH 5716			125716		29

V.W	NWO	SACHS	EATON	ORIGINAL	PG
RCS 5009	RDS 1009	3367		2991380	29
RCL 5035	RDS 1035	3307 / 3367	125802	82717548 A	29
RCL 5037	RDL 1037	3373	125804	2SK 141 165	29
RCH 5040		3040	125919	OR 2 2 O 141165	29
RCH 5323	RDL 1323	3362		2T2 141265	30
RCH 5349 SM	RDL 1349	3346		E 3 HN 7580 AA	30
RCH 5350	RDL 1350			2TB 141165	30
RCH 5360 AC	RDL1360 AC	3359		2 RP 141037 C	30
RCH 5390	RDL1360	3359		2 RP 141037 C	30
RCH 5369 SM	RDL 1360 SM	3348		ZZO 141707 A	31
RCH5363 SM	RDL 1363			2RP 141037 B	31
RCH 5366 AC	RDL 1366	3306	125710	2T2 141165 A	31
RCH 5380	RDL 1380	3371		2991380	31
RCH 5398	RDL 1398			2T2 141165	31
RCH 5498		3398	125944		32
RCH 5562 SM			125562		32
RCH 5583			125563		32
RCH 5585		3730	125655	2T2 141 165 K	32
RCH 5566		3344	125916		32
RCH 5597	RDL 1427 / 1426	3397	125793	2T2 141 165 E 2T2 141165 H	33
RCH 5650SM			125650		33
RCH 5716	RDL 1362		125716	2RP 141037 C	33
RCH 5717 SM			125717		33
RCH 5739		3730			33

<b>AGRALE CLUTCH FORKS</b>	<b>EATON</b>	<b>ORIGINAL</b>	<b>PG</b>
GDL350.05	997078		34
EXG 351		TJG 141865	34
EXG 352		TJG 141863	34

<b>FIAT CLUTCH FORKS</b>	<b>EATON</b>	<b>ORIGINAL</b>	<b>PG</b>
GDL350.24		1489891080	34

<b>FORD CLUTCH FORKS</b>	<b>EATON</b>	<b>ORIGINAL</b>	<b>PG</b>
GDL 350.05	997078	TJG 141861	34
EXG 351		TJG 141865	34
EXG 352		TJG 141863	34
GDL 350.07		TJG 141857	34
GDL 350.13		BE 2Y 7515 A	34
GDL 350.29	125737	8H1X 7544 BA	34
GDL 350.32	125598	8A1X 7544 AA	34

<b>HYUNDAI CLUTCH FORKS</b>	<b>EATON</b>	<b>ORIGINAL</b>	<b>PG</b>
GDL 350.18		4144344001	34

<b>MITSUBISHI CLUTCH FORKS</b>	<b>EATON</b>	<b>ORIGINAL</b>	<b>PG</b>
GDL 350.18		4144344001	34

<b>GM CLUTCH FORKS</b>	<b>EATON</b>	<b>ORIGINAL</b>	<b>PG</b>
GDL 350.06	125731 125743	TJG 141861	35
KTG 350.06-A			35
EXG 351		TJG 141865	35
EXG352		TJG 141863	35
GDL 350.08		00302935	35
GDL 350.09		00630239	35
GDL 350.10		007303694	35

<b>IVECO CLUTCH FORKS</b>	<b>EATON</b>	<b>ORIGINAL</b>	<b>PG</b>
GDL 350.06	997152 125743	503101155	35
KTG 350.06-A			35
EXG 351		TJG 141865	35
EXG352		TJG 141863	35

<b>MERCEDES BENZ CLUTCH FORKS</b>	<b>EATON</b>	<b>ORIGINAL</b>	<b>PG</b>
GDL 350.01		327 250 1213	36
GDL 350.02		352 250 01 13	36
GDL 350.03		381 254 02 08	36
GDL 350.04		970 254 03 08	36
GDL 350.04.A		000 254 00 17	36
EXG 358		679 254 01 06	36
GDL 350.11		386 250 00 13	36
KTG 350.11.A		382 250 01 13	36

EXG 355		388 254 00 06	36
GDL 350.12		388 250 05 13	37
KTG 350.12.A			37
EXG 353		388 254 00 06	37
EXG 354		388 254 01 06	37
GDL 350.19		655 254 07 08	37
KTG 350.19.A			37
KTG 350.19.B			37
EXG 357		655 254 02 06	37

<b>MBB GEAR SHIFT FORKS</b>	<b>EATON</b>	<b>ORIGINAL</b>	<b>PG</b>
GCL 423.01		344 260 01 30 321 260 2630	38
GCL 423.03		302 265 06 02	38
GCL 445.02		321 260 27 30	38
GCL 445.04		302 265 07 02 384 265 04 02	38
P5C 400.00		385 265 00 49	38
GCL 523.01		344 260 01 30 321 260 26 30	38
GCL 523.03		302 265 06 02 384 265 06 02	38
GCL 545.02		321 260 27 30	38
GCL 545.04		302 265 07 02 384 265 04 02	38
GCL 401-R		345 260 04 30 383 260 07 30	38

<b>SCÂNIA CLUTCH FORKS</b>	<b>EATON</b>	<b>ORIGINAL</b>	<b>PG</b>
GDL 350.27		1479577 173306	39
KTG 350.17.A		1733479 1335485	39
KTG 350.27.B			39

<b>VOLVO CLUTCH FORKS</b>	<b>EATON</b>	<b>ORIGINAL</b>	<b>PG</b>
GDL 350.14	127743	21333869	39
KTG 350.14.A			39
EXG 351		TJG 141865	39
EXG 352		TJG 141863	39

<b>VW CLUTCH FORKS</b>	<b>EATON</b>	<b>ORIGINAL</b>	<b>PG</b>
GDL 350.05	997078	2 RP 141 861 A	39
EXG 351		TLG-141865	39
EXG 352		TJG-141863	39
GDL 350.06	125743 125731	2R81 141 861	39
KTG 350.06.A			39
EXG 351		TJG 141 865	39
EXG 352		TJG 141 863	39
GDL 350.13		TPH 141857	40
GDL 350.14	125743 125731	2R81 141 861	40
KTG 350.14.A			40
EXG 351		TJG 141865	40
EXG 352		TJG 141 863	40
GDL 350.15		2 WO 311 551	40
GDL 350.21		2 T2 141 719 / E	40
KTG 350.21.A			40
GDL 350.22	125699	2T2 141720	40
KTG 350.22.A			40
GDL 350.30		2WOP0311549	40
KTG 350.30.A			40

<b>SETS FOR CLUTCH HOUSINGS</b>	<b>PG</b>
KTA 5101	41
KTA 5102	41
KTA 5103	41

<b>SETS FOR CLUTCH HOUSINGS</b>	<b>PG</b>
KTA 5104	41
KTA 5105	41
KTA 5108	41

<b>SETS FOR CLUTCH HOUSINGS</b>	<b>PG</b>
KTA 5107	41
KTA 5112	41
KTA 5113	41

### RCH 5010

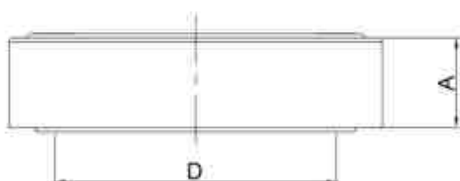


A - Altura / Height (mm) 93,0  
 B - Largura para o garfo / Width Fork (mm) 71,0  
 C - Diâmetro para mola membrana / Diameter of spring membrane (mm) 70,0  
 D - Diâmetro Furo / Hole diameter (mm) 57,5

RDL 1429  
 EATON 1271010

AGRALE MA 12.0, MA 15.0 MWM EURO 5 ALL  
 BUS NEOBUS MID BUS  
 INTERNATIONAL TRUCK 4.400 | DURASTAR  
 4/2 6/2  
 EURO 3 (ALL)  
 PULL CLUTCH 365 mm  
 APLICACION KTA 5105

### RCS 5019

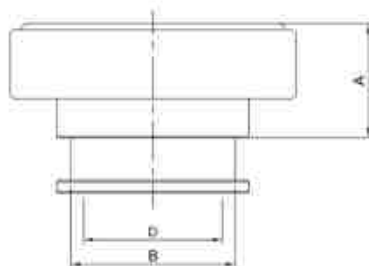


A - Altura / Height (mm) 22,0  
 D - Diâmetro Furo / Hole diameter (mm) 55,0

NWO RDS 1009  
 6003.033.035.001

TRUCK 1600 RS, RD DIESEL , 1800 RS,  
 RD (93-94), 7000

### RCL 5035

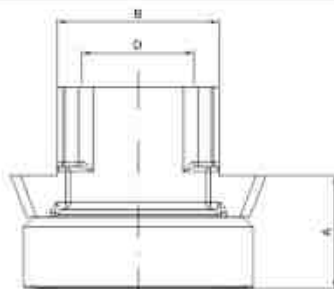


A - Altura / Height (mm) 36,70  
 B - Largura para o garfo / Width Fork (mm) 52,80  
 D - Diâmetro Furo / Hole diameter (mm) 44,60

SACHS 3367  
 NWO RDC 1035  
 EATON 125802  
 6003.033.035.001

PLATEAU 280 mm PULL CLUTCH  
 TRUCK 1600D, 1800D, 4500D, 5000D, 7000D  
 MWM 229.3, 229.4 MWM 4, MWM 4.1 13"

### RCH 5040

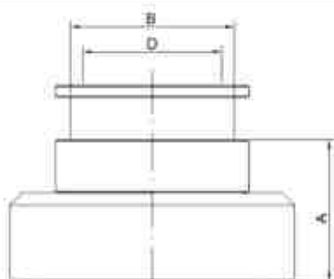


A - Altura / Height (mm) 45,0  
 B - Largura para o garfo / Width Fork (mm) 64,80  
 D - Diâmetro Furo / Hole diameter (mm) 44,60

SACHS 3040  
 EATON 125919  
 2PO141165  
 AGRALE MA 87, VOLARE W.8  
 TRUCK 6.500, 8.700, EURO 5 2012...

PULL CLUTCH 330 mm

### RCH 5303

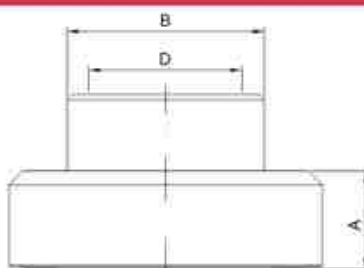


A - Altura / Height (mm) 45,50  
 B - Largura para o garfo / Width Fork (mm) 52,80  
 D - Diâmetro Furo / Hole diameter (mm) 44,60

NWO RDL1303  
 6013.033.035.001

HYDRAULIC CLUTCH 280 MM PULL  
 TRUCK 7000, 7500, 8500, 1600D, 1800D, 4500D,  
 5000D  
 PLATEAU SACHS 280 / 300 / 325 mm

**RCH 5347**



A - Altura / Height (mm) 28,7  
 B - Largura para o garfo / Width Fork (mm) 57,9  
 D - Diâmetro Furo / Hole diameter (mm) 44,80

**SACHS 3347**  
**NWO RDL 1428**  
**EATON 125783**  
**6013.0033.005**  
**6020.0030.16005**

PLATEAU 325 mm  
 TRUCK 7500 / 8500 / 9500 E-TRONIC, MICRO BUS CHASSI  
 7.5 EMEC, E-TRONIC MA 8.5, 9.5 E-TRONIC VOLARE W8,  
 W9 ELETRONIC TO ROLED FORK

**RCH 5360 AC**

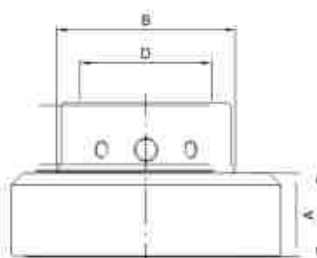


d - Diâmetro Furo / Hole diameter (mm) 57,50  
 D - Ø encaixe membrana / Ø diaphragm fitting (mm) 80,00  
 H - Altura / Height (mm) 112,00

**SACHS 3359**  
**NWO RDL 1360AC**

PLATEAU 380 mm GEARSHIFT AUTO CENTER,  
 PULL CLUTCH  
 TRUCK CHASSIS MT 12.0 LE E-TRONIC CUMMINS, CHASSIS  
 MT 12.0 SB E-TRONIC CUMMINS INTERACT 4170 CV AFTER  
 2004 CHASSI MA 12.0 E-TRONIC CUMMINS, INTERACT 6 185 E  
 220 CV OVER 2004  
 CHASSIS NA 15-0, EURO II UP 2012  
 APPLICATION SET KTA 5101

**RCH 5365**

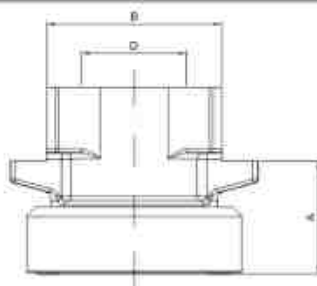


A - Altura / Height (mm) 28,70  
 B - Largura para o garfo / Width Fork (mm) 62,0  
 D - Diâmetro Furo / Hole diameter (mm) 44,60

**SACHS 3722 / 3389**  
**NWO RDL 1365**  
**EATON 125790**  
**6007.0030.48005 / 6013.003.033.005**

MARCOPOLO VOLARE MICRO BUS A5, A8, FURGOVAN  
 6000 RSE, A 8000  
 TRUCK SERIE 6000, 6000D, 7000, 7500, 8000 MWM TCA,  
 8500, 9200 MWM TCAE  
 MECHANIC MOTOR ELECTRICAL HOUSING COMPLETE  
 CLUTCH 300/330 mm EMPUJAR  
 MWM T2229 EC4T  
 MWM T4.10 TURBO MWM 4.10 TCA  
 CHASSI MA 8.5, 9.2 E TRONIC  
 MWM ACTEON 4.12 TCAE 150 (CV) SPRINT

**RCH 5399**

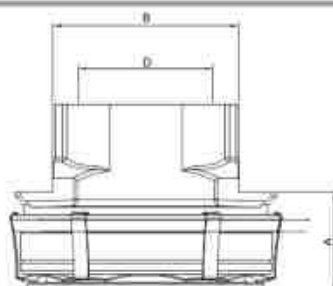


A - Altura / Height (mm) 48,0  
 B - Largura para o garfo / Width Fork (mm) 74,80  
 D - Diâmetro Furo / Hole diameter (mm) 44,80

**SACHS 3399**  
**RDL 1431**  
**6025003025005**

**AGRALE 330mm**

**RCH 5400 AC**



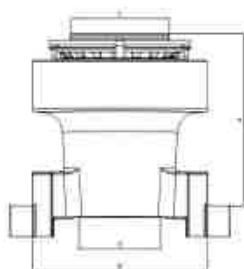
A - Altura / Height (mm) 40,0  
 B - Largura para o garfo / Width Fork (mm) 74,80  
 D - Diâmetro Furo / Hole diameter (mm) 44,90

**SACHS 3400**  
**EATON 125910**

AGRALE (362 mm) MA 9.2 , MA 10.0, VOLARE W8,  
 W.9, WL 2012>...  
 TRUCK 10.000 (MOTOR MWM MAXXIFORCE  
 4.8 (165 CV), VOLARE W8 W9  
 APPLICATION PLATEAU 1852 SACHS 362 mm  
 PUSH



RCH 5563



A - Altura / Height (mm) 121,0  
 B - Largura para o garfo / Width Fork (mm) 123,80  
 C - Diâmetro para mola membrana / Diameter of spring membrane (mm) 70,0  
 D - Diâmetro Furo / Hole diameter (mm) 57,5

EATON 125563 / 125715

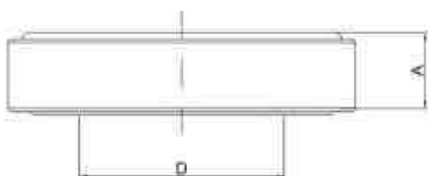
PLATEAU 365 mm PULL CLUTCH  
 BUS MA/MT 12 HASTA 2005, BUS MA 15 UNTILL 2006,  
 BUS 12.0 E-TRONIC INTERACT 4 170 CV, BUS MA 12  
 SB E-TRONIC INTERACT 4 170 CV 2006...,  
 MA 15.0 MWM 4.12 TCE 180 CV 2007 ...  
 APPLICATION SET KTA 5105

# CBT

## TECHNICAL DRAWING

## REFERENCE/APPLICATION

RCS 5015



A - Altura / Height (mm) 25,0  
 D - Diâmetro Furo / Hole diameter (mm) 69,85

NWO RDS 1015  
 090.0602.021

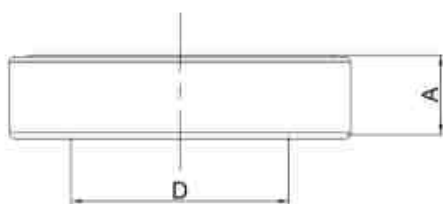
CBT ALL MODELS

# CHRYSLER

## TECHNICAL DRAWING

## REFERENCE/APPLICATION

RCS 5009

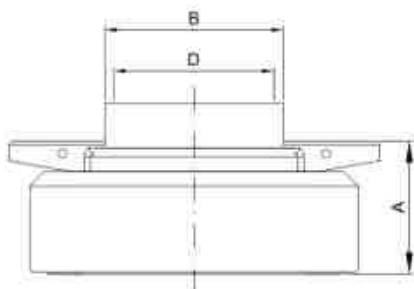


D - Diâmetro Furo / Hole diameter (mm) 52,40  
 A - Altura / Height (mm) 20,0

SACHS 3367  
 NWO RDS 1009  
 AL 2116 T  
 FAG 526468

DODGE DART, CHARGER RT, GRAN SEGAM , MAGNUN

RCH 5323

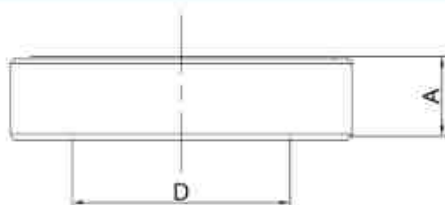


A - Altura / Height (mm) 36,50  
 B - Largura para o garfo / Width Fork (mm) 49,80  
 D - Diâmetro Furo / Hole diameter (mm) 44,50

SACHS 3323  
 NWO RDL 1323  
 EATON 125800

DODGE 700, 900, 950 E, 17110 S, 10/ 87 A 02/ 94, 8100, 8200,  
 11130, 13150 ALL  
 PUSH CLUTCH

**RCS 5009**

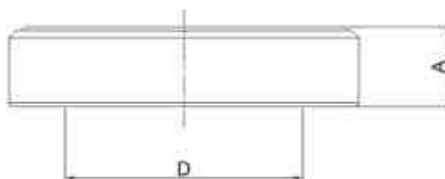


D - Diámetro Furo / Hole diameter (mm) 52,40  
A - Altura / Height (mm) 20,0

SACHS 3367  
NWO RDS 1009  
BC 4N 7580 A  
02987123  
FAG 526468

GALAXIE 500 LTD, LANDAU, F 400, F 600, F 1000, F 4000, F 250,  
F 350, SERIE P 4 00 68, P 350, P 400  
F 100 / 150

**RCS 5016**



D - Diámetro Furo / Hole diameter (mm) 63,50  
A - Altura / Height (mm) 22,0

NWO RDS 1016  
3.585.341  
INA F 45 984-2  
FAG 576040

F 4600, 6600

**RCH 5010**



A - Altura / Height (mm) 90,0  
B - Largura para o garfo / Width Fork (mm) 71,0  
C - Diámetro para mola membrana / Diameter of spring membrane (mm) 70,0  
D - Diámetro Furo / Hole diameter (mm) 57,5

EATON 127.1010  
BH6X 7548 BA

NEW FORD CARGO 1723 KOLEKTOR, CUMMINS  
1729 TRACTOR, 2428 2429  
MOTOR CUMMIS 5.91 275-CV ALL ...2012  
PLATEAU EATON 395MM PULL CLUTCH  
REFERENCE EATON 138 215-1 APLICATION  
CLUTCH  
SACHS 395 mm  
APPLICATION SET KTA 5105

**RCH 5029**

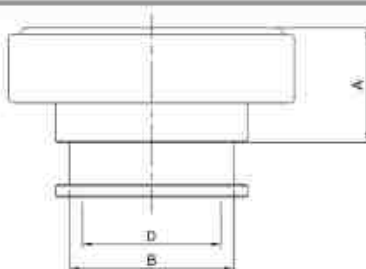


A - Altura / Height (mm) 122,0  
B - Largura para o garfo / Width Fork (mm) 71,0  
C - Diámetro para mola membrana / Diameter of spring membrane (mm) 70,0  
D - Diámetro Furo / Hole diameter (mm) 57,5

EATON 127.1029 / 125.1040  
F 81A7548 AC

NEW FORD CARGO 1317E, 1319E, 1517, 1519, 1717E,  
1719  
MOTOR CUMMIS 3.91 (170 CV) CUMMINS  
TRUCK 2011 1722 E 2422 TODOS 1723, 2423 2012...  
MOTOR CUMMIS 5.91 220-CV 2011...  
PLATEAU 365MM LUK PULL CLUTCH  
REFERENCE EATON 138.206.2 PLATEAU DISC.  
SACHS 365 mm  
APPLICATION SET KTA 5105

**RCL 5035**

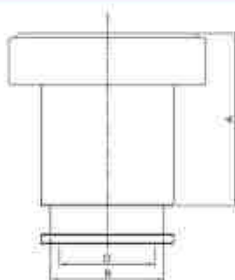


A - Altura / Height (mm) 36,70  
B - Largura para o garfo / Width Fork (mm) 52,80  
D - Diámetro Furo / Hole diameter (mm) 44,60

SACHS 3367  
NWO RDC 1035  
EATON 125802  
82 TU 7548 A

PLATEAU 280 / 300 / 325 / 330 mm  
PUSH CLUTCH  
F 1000, F 2000, F 4000 ATÉ 79 - F 11000, F 13000, F 14000,  
F 16000, F 19000, F 21000, F 22000 HASTA 86 MT MWM D229-6  
13" FORD 4.4 MWM 229.4 FORD 272  
F 600, F 700 MAXION PERKINS MWM, F 7000, FT 7000, F350,  
F 400, F 4000 ...003-92  
CARGO 1113, 1313, 712E, 2007 A 2012

**RCL 5037**

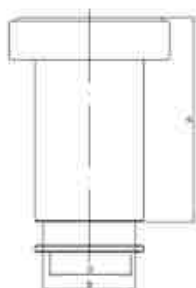


A - Altura / Height (mm) 80,0  
B - Largura para o garfo / Width Fork (mm) 52,80  
D - Diâmetro Furo / Hole diameter (mm) 44,60

SACHS 3373  
NWO RDC 1037  
2SK 141.165  
XC45 7548 AA

PLATEAU 300 / 325 / 330 mm PUSH CLUTCH  
F 4000 TURBO DIESEL MWM CUMMINS 09/97 A 1998  
CARGO 814, 815 CUMMINS 13" 4BTAA 180CV MECANIC

**RCL 5038**

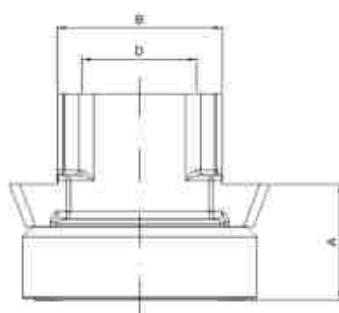


A - Altura / Height (mm) 115,60  
B - Largura para o garfo / Width Fork (mm) 52,80  
D - Diâmetro Furo / Hole diameter mm 44,60

SACHS 3387  
NWO RDC 1038  
EATON 125801  
2SL 141.165

PLATEAU 325 / 330 mm PUSH CLUTCH  
F 12000, F 14000, 1600 HD MOTOR MWM 6.10  
F 14000 HD

**RCH 5040**

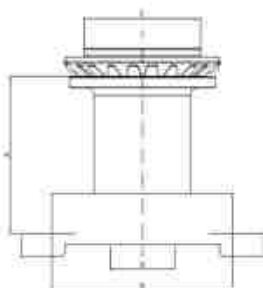


A - Altura / Height (mm) 45,0  
B - Largura para o garfo / Width Fork (mm) 64,80  
D - Diâmetro Furo / Hole diameter (mm) 44,60

SACHS 3040  
EATON 125919  
V.W. 2ZO-141165  
2P0 - 141165  
457548 AA

FORD 816-E, 1119 4.5 (2012 / 2013) FORD CARGO 816-E, 1119  
CUMMINS ISB 4.5 160 P70 EURO 5  
TRANSMISSION EATON FS-4505-D  
PLATEAU APPLICATION 1085 SACHS  
PLATEAU 330 mm PUSH CLUTCH

**RCH 5348 SM**

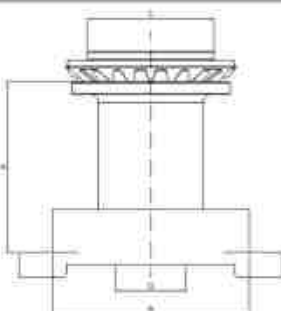


A - Altura / Height (mm) 105,0  
B - Largura para o garfo / Width Fork (mm) 124,0  
C - Diâmetro para mola membrana / Diameter of spring membrane (mm) 80,0  
D - Diâmetro Furo / Hole diameter (mm) 44,50

SACHS 3358  
NWO RDL 1348  
6TH 6580  
2Z 0141707-A

PLATEAU 350 / 380 mm - GEARSHIFT  
PULL CLUTCH  
CARGO C1117, 1215, 1218, C1317, 1415, 1417, 1418, 1419,  
C1517, 1519, 1615, 1617, 1618, 1619, C2217, 2218, 2319  
BUS B1618  
APPLICATION SET KTA 5101

**RCH 5349 SM**

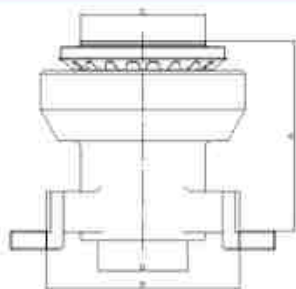


A - Altura / Height (mm) 107,0  
B - Largura para o garfo / Width Fork (mm) 124,0  
C - Diâmetro para mola membrana / Diameter of spring membrane (mm) 80,0  
D - Diâmetro Furo / Hole diameter (mm) 44,50

SACHS 3346  
NWO RDL 1349  
E 3HN 7580 AA

CARGO C11-17 C 13-17, C 15-17, C 16-18, C 22-17 ASPIRATED  
APPLICATION GEARSHIFT PLATEAU 350 mm  
PULL CLUTCH  
APPLICATION SET KTA 5101

#### RCH 5350

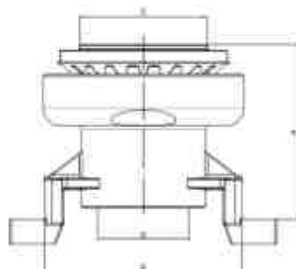


A - Altura / Height (mm) 119,30  
 B - Largura para o garfo / Width Fork (mm) 124,0  
 C - Diâmetro para mola membrana / Diameter of spring membrane (mm) 80,0  
 D - Diâmetro Furo / Hole diameter (mm) 57,50

NWO RDL 1350  
 2RP 141.037C  
 BG 1X 7561-AA  
 BF 7X 7A 605A  
 LUK 500083910

PLATEAU LUK 365 mm PULL CLUTCH  
 15170, 15180, 16170, 16180, 16200, 16210, 17210, 22170,  
 24220  
 BUS 16210, CARGO 1117 TURBO, CARGO 1317 TURBO,  
 CARGO 1517 TURBO, CARGO 2217 TURBO  
 1317, 1517, 12170, 12180, 13170, 13180, 14150, 14170, 14180,  
 14200, 14220  
 APPLICATION SET KTA 5101

#### RCH 5360 SM

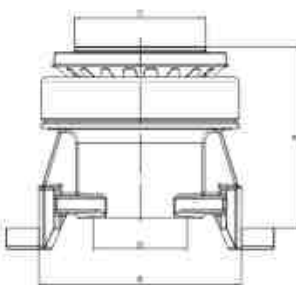


A - Altura / Height (mm) 112,0  
 B - Largura para o garfo / Width Fork (mm) 124,0  
 C - Diâmetro para mola membrana / Diameter of spring membrane (mm) 80,0  
 D - Diâmetro Furo / Hole diameter (mm) 57,50

SACHS 3348  
 NWO RDL 1360 SM  
 EATON 125562  
 2ZO 141.707 A  
 BF6X 7A605 A

PLATEAU 350 / 380 mm PULL CLUTCH  
 TRUCK AND BUS OVER 170 CV  
 GEARSHIFT EXCEPT LINEA CONSTELLATION 1117  
 1422, 1517, 1519, 1521, 1615, 1617, 1618, 1619, 1215, 1218, 1317,  
 1415, 1417, 1418, 1419, 1421, 1621, 1622, 1630, 1721, 1722, 1730,  
 1731, 2217, 2218, 2219, 2319, 2322, 2324, 2421, 2422, 2524, 2622,  
 2626, 2630, 2631, 3222, 3224, 3530, 4030, 4031, 4331 MAXTRON  
 F 12000, F 14000, F 16000, BUS B 1618, B 1621  
 APPLICATION SET KTA 5101

#### RCH 5360 AC

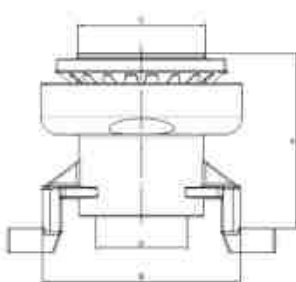


A - Altura / Height (mm) 112,0  
 B - Largura para o garfo / Width Fork (mm) 124,0  
 C - Diâmetro para mola membrana / Diameter of spring membrane (mm) 80,0  
 D - Diâmetro Furo / Hole diameter (mm) 44,50

SACHS 3359  
 NWO RDL 1360 AC  
 2RP 141.037 B  
 BF7X 7A605 A

PLATEAU 350 / 380 / 395 mm AUTO CENTER  
 PULL CLUTCH  
 TRUCK AND BUS OVER 170 CV GEARSHIFT  
 CON MORINGA 1215, 1317, 1415, 1421, 1422, 1517, 1519, 1521, 1615,  
 1618, 1621, 1622, 1630, 1717 CAIXA EATON, 1721, 1722, 1730, 1731,  
 2217, 2218, 2219, 2319, 2322, 2324, 2421, 2422, 2425, 2428, 2622,  
 2626, 2628 E, 2630, 2631, 2632 E, 3222, 3224, 3530, 4030, 4031,  
 4432 E, 4532 E, 5032 E, ÔNIBUS, 1618, 1621, 2631/4031 UNTIL 2005  
 PLATEAU SACHS, LUK  
 APPLICATION SET KTA 5101

#### RCH 5360

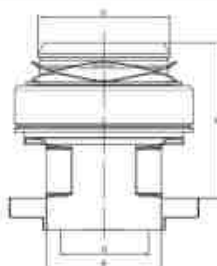


A - Altura / Height (mm) 112,0  
 B - Largura para o garfo / Width Fork (mm) 124,0  
 C - Diâmetro para mola membrana / Diameter of spring membrane (mm) 80,0  
 D - Diâmetro Furo / Hole diameter (mm) 57,50

SACHS 3359  
 NWO RDL 1360  
 2RP 141.037B  
 BF6X 7A605 A

PLATEAU 350 / 380 / 395 mm PULL CLUTCH  
 TRUCK AND BUS OVER DE 170 CV GEARSHIFT  
 1215, 1317, 1415, 1421, 1422, 1517, 1519, 1521,  
 1615, 1618, 1621, 1622, 1630, 1717 EATON, 1721, 1722,  
 1730, 1731, 2217, 2218, 2219, 2319, 2322, 2324, 2421, 2422, 2425,  
 2428, 2622, 2626, 2628 E, 2630, 2631, 2632 E, 3222, 3224, 3530,  
 4030, 4031, 4432 E, 4532 E, 5032 E, BUS 1618, 1621,  
 2631/4031 UNTIL 2005 PLATEAU SACHS, LUK  
 APPLICATION SET KIT KTA 5101

#### RCH 5431 AC



A - Altura / Height (mm) 104,50  
 B - Largura para o garfo / Width Fork (mm) 77,80  
 C - Diâmetro para mola membrana / Diameter of spring membrane (mm) 90,0  
 D - Diâmetro Furo / Hole diameter (mm) 63,50

SACHS 3100, 3431  
 EATON 125755 / 1251050  
 FORD - AC 457548-AB  
 457548 AC  
 RTLO 14918 B

NEW FORD CARGO 1932, 1932 R, 1933, 3132, 3133  
 MOTOR CUMMINS ISC 315 P5 ISL 8.9330 ICS 8.3  
 8.31 (320 CV) TODOS 3133 ...2012 CX FTS 16108 LL /  
 FTS 16112 LL  
 PLATEAU 430 mm FAST COUPLING PULL CLUTCH  
 APPLICATION SET KTA 5106

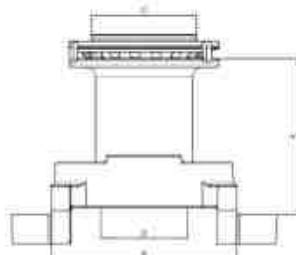
**RCH 5529 AC**



A - Altura / Height (mm) 112,0  
B - Largura para o garfo / Width Fork (mm) 71,0  
C - Diámetro para mola membrana / Diameter of spring membrane (mm) 70,0  
D - Diámetro Furo / Hole diameter (mm) 57,5

FORD CARGO 1317 (GARBAGE TRUCK)  
SACHS 380 mm

**RCH 5562 SM**

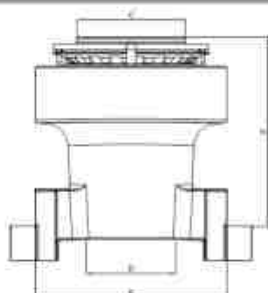


A - Altura / Height (mm) 103,50  
B - Largura para o garfo / Width Fork (mm) 123,80  
C - Diámetro para mola membrana / Diameter of spring membrane (mm) 70,0  
D - Diámetro Furo / Hole diameter (mm) 44,5

EATON 125562

PLATEAU EATON 365mm GEARSHIFT PULL CLUTCH  
CARGO 1117, 1215, 1218, 1317, 1415, 1417, 1418, 1419, 1421, 1422, 1517, 1519, 1521, 1522, 1615, 1617, 1618, 1619, 1717, 1721, 1722, 1730, 1731, 2217, 2218, 2219, 2319, 2322, 2324, 2421, 2422, 3222, F 12000 E F 14000, F 16000 UNTIL JULY 1999, BUS 1618, 1621  
APPLICATION SET KTA 5105

**RCH 5563**

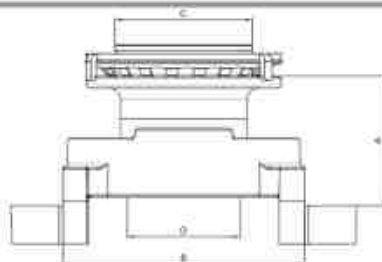


A - Altura / Height (mm) 121,0  
B - Largura para o garfo / Width Fork (mm) 123,80  
C - Diámetro para mola membrana / Diameter of spring membrane (mm) 70,0  
D - Diámetro Furo / Hole diameter (mm) 57,5

EATON 125563

PLATEAU EATON 365mm GEARSHIFT PULL CLUTCH  
CARGO 1117, 1215, 1218, 1317, 1415, 1417, 1418, 1419, 1421, 1422, 1517, 1519, 1521, 1522, 1615, 1617, 1618, 1619, 1717, 1721, 1722, 1730, 1731, 2217, 2218, 2219, 2319, 2322, 2324, 2421, 2422, 3222, F 12000 E F 14000, F 16000 UNTIL JULY 1999, BUS 1618, 1621  
APPLICATION SET KTA 5105

**RCH 5650 SM**

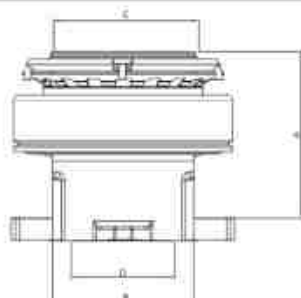


A - Altura / Height (mm) 66,0  
B - Largura para o garfo / Width Fork (mm) 123,80  
C - Diámetro para mola membrana / Diameter of spring membrane (mm) 70,0  
D - Diámetro Furo / Hole diameter (mm) 44,5

EATON 125650

PLATEAU EATON 365 mm GEARSHIFT PULL CLUTCH DOUBLE CLUTCH (BI DISC)  
CARGO 1630, 1730, 1731, 1831, 2324, 2422 6X4, 2425, 2622, 2630, 2631, 2831, 3224, 3530, 4030, 4031, 4331, 5031, 4331 S MAXTRON 5031  
APPLICATION SET KTA 5105

**RCH 5713**

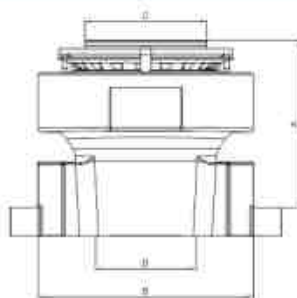


A - Altura / Height (mm) 90,0  
B - Largura para o garfo / Width Fork (mm) 79,0  
C - Diámetro para mola membrana / Diameter of spring membrane (mm) 80,0  
D - Diámetro Furo / Hole diameter (mm) 57,50

EATON 125713

NEW CABIN, NEW FORD CARGO 2429, 2622E, 2223E, 2628, 2629  
APPLICATION CLUTCH EATON 130 215-1  
PLATEAU 395 mm PULL CLUTCH  
APPLICATION SET KTA 5101

**RCH 5716**



A - Altura / Height (mm) 95,50  
B - Largura para o garfo / Width Fork (mm) 123,80  
C - Diâmetro para mola membrana / Diameter of spring membrane (mm) 70,0  
D - Diâmetro Furo / Hole diameter (mm) 57,5

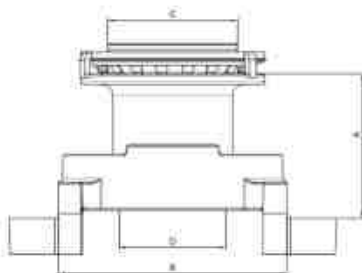
**EATON 125716**

PLATEAU EATON 395 mm GEARSHIFT  
PULL CLUTCH

CARGO 1630, 1730, 1731, 2324, 2422 6X4, 2425, 2622, 2626, 2630,  
2631, 2632, 2831, 2932, 3224, 3530, 4030, 4031, 4331, 4432.4, 5031,  
5032, 6332( 6X2, 6X4 )

APPLICATION SET KTA 5105

**RCH 5717 SM**



A - Altura / Height (mm) 78,0  
B - Largura para o garfo / Width Fork (mm) 123,80  
C - Diâmetro para mola membrana / Diameter of spring membrane (mm) 70,0  
D - Diâmetro Furo / Hole diameter (mm) 44,5

**EATON 125717**

PLATEAU EATON 395 mm GEARSHIFT  
PULL CLUTCH

CARGO 1630, 1730, 1731, 1831, 2324, 2422 6X4, 2425, 2622, 2630,  
2631, 2831, 3224, 3530, 4030, 4031, 4331, 5031, 4331 S MAXTRON

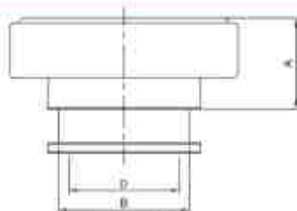
APPLICATION SET KTA 5105

**GM - GENERAL MOTORS**  
HOUSINGS

TECHNICAL DRAWING

REFERENCE/APPLICATION

**RCL 5035**

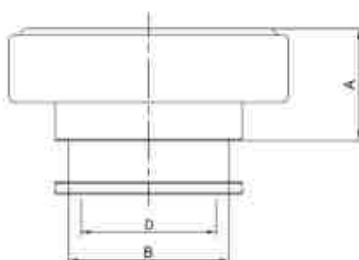


A - Altura / Height (mm) 36,70  
B - Largura para o garfo / Width Fork (mm) 52,80  
D - Diâmetro Furo / Hole diameter (mm) 44,80

SACHS 3367  
NWO RDC 1035  
EATON 125802  
94.609.464

PLATEAU SACHS 325 / 330 mm PULL CLUTCH  
GM 11000, 12000, 13000, 14000, 15000, 21000,  
22000 MAXION ( Q20 B 6 )

**RCL 5036**

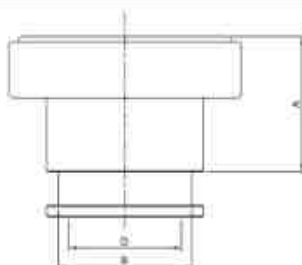


A - Altura / Height (mm) 34,60  
B - Largura para o garfo / Width Fork (mm) 52,80  
D - Diâmetro Furo / Hole diameter (mm) 44,60

NWO RDC 1036  
94.609.464

D 60 CON MOTOR PERKINS 6357/6358  
CLUTCH 300/305 mm  
APPLICATION PLATEAU SACHS 1286

**RCL 5061**

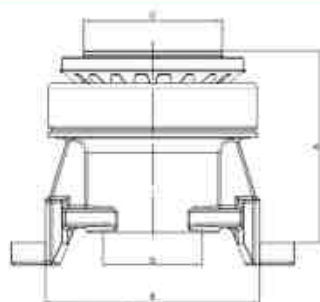


A - Altura / Height (mm) 53,0  
B - Largura para o garfo / Width Fork (mm) 52,80  
D - Diâmetro Furo / Hole diameter (mm) 44,60

NWO RDL 1061  
93 D 2934

D 60 CON MOTOR DETROIT OVER 09/80  
CLUCHT 300/305 mm PULL

**RCH 5360 AC**

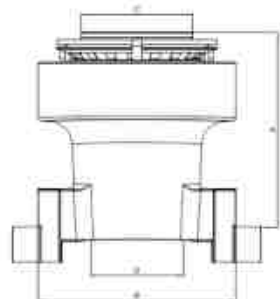


A - Altura / Height (mm) 112,0  
B - Largura para o garfo / Width Fork (mm) 124,0  
C - Diâmetro para mola membrana / Diameter of spring membrane (mm) 80,0  
D - Diâmetro Furo / Hole diameter (mm) 57,50

**SACHS 3348 / 3359**  
**NWO RDL 1380 AC**

**PLATEAU 380 mm PULL CLUTCH**  
**GM 12179, 14190, 16220**  
**AUTO CENTER, CARTERPILLAR 3116 CX FS5205A**  
**6306A**  
**(SERVO)**  
**APPLICATION SET KTA 5101**

**RCH 5563**



A - Altura / Height (mm) 121,0  
B - Largura para o garfo / Width Fork (mm) 123,80  
C - Diâmetro para mola membrana / Diameter of spring membrane (mm) 70,0  
D - Diâmetro Furo / Hole diameter (mm) 57,5

**EATON 125563**

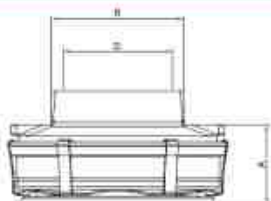
**PLATEAU EATON 365 mm PULL CLUTCH**  
**GM 12179, 14190, 16220**  
**JULY 2000**  
**APPLICATION SET KTA 5105**

**IVECO**  
**HOUSINGS**

**TECHNICAL DRAWING**

**REFERENCE/APPLICATION**

**RCH 5320 AC**

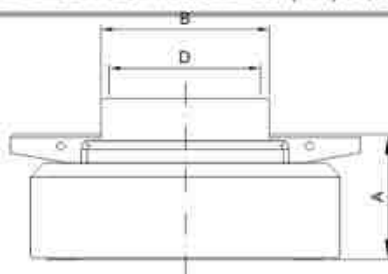


A - Altura / Height (mm) 40,0  
B - Largura para o garfo / Width Fork (mm) 65,80  
D - Diâmetro Furo / Hole diameter (mm) 54,60

**SACHS 3325**  
**NWO RDL 1320**  
**EATON 125807**  
**7138964**  
**8060.45 A**  
**71444597**

**PLATEAU 350 mm PULL CLUTCH**  
**EURO CARGO E 160, E 21, 1260**

**RCH 5323**

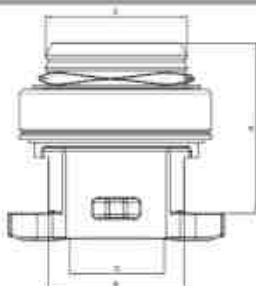


A - Altura / Height (mm) 36,50  
B - Largura para o garfo / Width Fork (mm) 49,80  
D - Diâmetro Furo / Hole diameter (mm) 44,50

**SACHS 3323**  
**NWO RDL 1323**  
**EATON 125800**  
**7145819**  
**8060.25 R**  
**T1314161**

**PLATEAU 325 / 330 mm PULL CLUTCH**  
**EURO CARGO E 120, E 15**

**RCH 5336 AC**

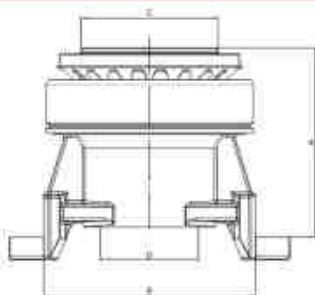


A - Altura / Height (mm) 104,60  
B - Largura para o garfo / Width Fork (mm) 85,50  
C - Diâmetro para mola membrana / Diameter of spring membrane (mm) 90,0  
D - Diâmetro Furo / Hole diameter (mm) 63,20

**SACHS 3366**  
**NWO RDL 1336**  
**EATON 125652**  
**190.0756, 190.4779, 190.4780, 190.4785, 190.4796,**  
**190.5282, 421.02103, 504.120885, 504.385079, 500.317671,**  
**504.091142**

**PLATEAU 430 mm FAST COUPLING PULL CLUTCH**  
**IVECO EURO TECH 8210-42 KA 13.8 TURBO EURO TRAKKER**  
**450 E32T, 450 E33T STRALIS 4X2 6X2 6X4**  
**190, 240, 260 - EURO CARGO 150 E, 260 E, 320 E - EURO STAR 190 E,**  
**140 C, 260 E, 400 E, 440 E, EURO TECH 180 E, 190 E, 240 E, 260 E,**  
**325 E, 400 E, 440 E - EURO TRAKKER 190 E, 260 E, 330 E, 400 E,**  
**720 E - BUS 380-29, 380-35, 380-28**  
**APPLICATION SET KIT KTA 5106**

**RCH 5360 AC**

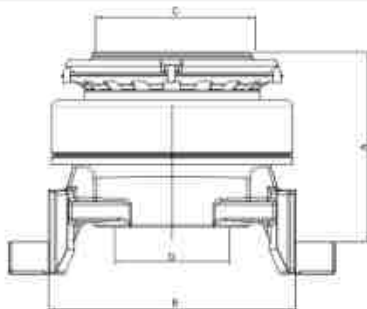


A - Altura / Height (mm) 112,0  
B - Largura para o garfo / Width Fork (mm) 124,0  
C - Diâmetro para mola membrana / Diameter of spring membrane (mm) 80,0  
D - Diâmetro Furo / Hole diameter (mm) 57,50

SACHS 3359  
NWO RDL 1360 AC  
5801302211  
503101330

PLATEAU AUTO CENTER 350 mm  
PULL CLUTCH  
TRUCK EURO CARGO TECTOR 170 E 21 MWM  
6.10 TCA GERARSHIFT  
APPLICATION SET KTA 5101

**RCH 5391 AC**

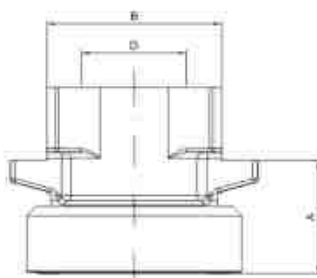


A - Altura / Height (mm) 94,0  
B - Largura para o garfo / Width Fork (mm) 124,0  
C - Diâmetro para mola membrana / Diameter of spring membrane (mm) 80,0  
D - Diâmetro Furo / Hole diameter (mm) 57,50

SACHS 3391  
IVECO 50310133

PLATEAU 350 / 380 mm PULL CLUTCH  
EURO CARGO TECTOR 170 E 22, 230 E 22, 230 E 24, 241  
BUS CC 170 E 22 OVER 2004  
CARGO TECTOR SCUDATO CC 170 E 23, 230 E24  
APPLICATION SET KTA 5101

**RCH 5399**

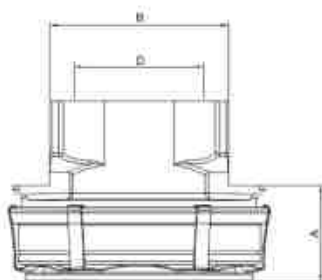


A - Altura / Height (mm) 48,0  
B - Largura para o garfo / Width Fork (mm) 74,80  
D - Diâmetro Furo / Hole diameter (mm) 44,80

SACHS 3399  
RDL 1431  
5949890189

IVECO (330 mm) PULL CLUTCH  
VERTIS 90 V 16, 90 V 18,  
EURO 3 EURO 5 NEF-4 ALL 9 TON  
TRANSMISSION ZF 5-S-420 HD

**RCH 5400 AC**

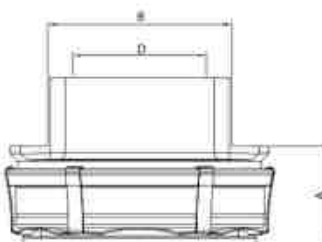


A - Altura / Height (mm) 40,0  
B - Largura para o garfo / Width Fork (mm) 74,80  
D - Diâmetro Furo / Hole diameter (mm) 44,90

SACHS 3400  
EATON 125910  
IVECO 5949890688

TRUCK IVECO (362 mm) VERTIS 130 V 18, NFF4  
130 V 19, EURO 3/5  
MOTOR FPT 4.19 ALL 13 TON  
APPLICATION PLATEAU 1852 SACHS  
PULL CLUTCH

**RCH 5401**



A - Altura / Height (mm) 40,0  
B - Largura para o garfo / Width Fork (mm) 74,80  
D - Diâmetro Furo / Hole diameter (mm) 57,50

SACHS 3401

TRUCK IVECO STRADALE 240 25S 6X2 TECTOR  
NEF6  
EURO 3/5, CX ZF 1100TD  
PLATEAU 395 mm PULL CLUTCH



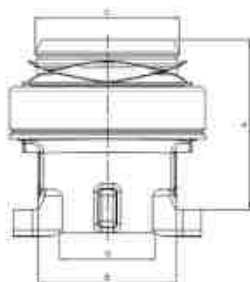
# IVECO

## HOUSINGS

### TECHNICAL DRAWING

### REFERENCE/APPLICATION

RCH 5498 AC



A - Altura / Height (mm) 104,50  
 B - Largura para o garfo / Width Fork (mm) 85,50  
 C - Diâmetro para mola membrana / Diameter of spring membrane (mm) 90,0  
 D - Diâmetro Furo / Hole diameter (mm) 63,20

SACHS 3398

TRUCK IVECO STRALIS 360 CURSOR 9 (ALL)  
 STRALIS - 360, 380, 400, 410, 440, 460, 480 CURSOR  
 13 EURO 5 (ALL)  
 GEARSHIFT ZF 16 AS, 2630, 2631 AS TRONIC  
 PLATEAU 430 mm 1457 FAST COUPLING  
 PULL  
 MAN TGX 26440, 28440, 29440, 33440D ...2012  
 APPLICATION SET KTA 5106

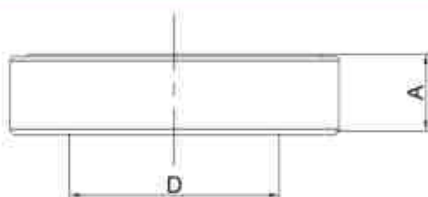
# JOHN DEERE

## BEARINGS

### TECHNICAL DRAWING

### REFERENCE/APPLICATION

RCS 5009



A - Altura / Height (mm) 20,0  
 D - Diâmetro Furo / Hole diameter (mm) 52,40

SACHS 3367  
 NWO RDS 1009  
 AL 2216 T AM 1284 T

TRACTOR SERIE 4020 68 A 75

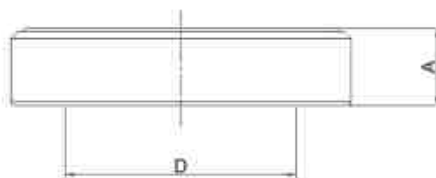
# MASSEY

## BEARINGS

### TECHNICAL DRAWING

### REFERENCE/APPLICATION

RCS 5016



D - Diâmetro Furo / Hole diameter (mm) 63,50  
 A - Altura / Height (mm) 22,0

NWO RDS 1016  
 358.5341.M1  
 487.874-M2  
 FAG 576040

MF 55X, 65R, 85X, 95X, 220, 250, 265, 270, 275,  
 290, 292, 310, 385

# MERCEDES

## BENZ HOUSINGS

### DISEÑO TÉCNICO

### REFERENCIA / APLICACION

RCS 5007

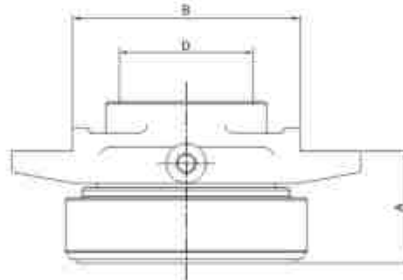


A - Altura / Height (mm) 21,80  
 D - Diâmetro Furo / Hole diameter (mm) 50,0

NWO RDS 1007  
 000.254.0020  
 000.252.0120  
 345.254.7020

12, 321, 1111, 1113, 1116, 1117, 1314, 1316, 1317, 1513, 1514, 1516, 1517, 1518,  
 1813, 1924, 2013, 2014, 2213, 2214, 2216, 2218, LP 312, LP 312 L, L 1111, L 1113,  
 L 1314, L 1513, L1514, L 2013, L 2014, L 2213, LPO / OF 1113, 1114, DF/OH 1113,  
 1114, O 321, O 352, O 362, O 364, O 365 MT - OM 352

**RCH 5020**

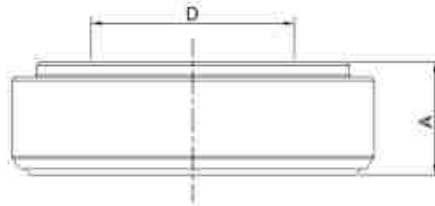


A - Altura / Height (mm) 44,8  
B - Largura para o garfo / Width Fork (mm) 91,8  
D - Diámetro Furo / Hole diameter (mm) 54,0

SACHS 3384  
NWO RDC 1020  
320.250.0015  
343.254.0010  
345.981.7901

PLATEAU 380 mm PULL CLUTCH  
1423, 1519, 1520, 1620, 1624, 1921, 1924, 2020, 2023,  
2223, 2224, 2620 O-317, OM-355, OM-326, O-331,  
O-355, O-364, 1418, 1619, 1920, 2219

**RCS 5020**

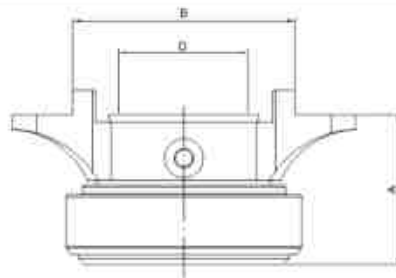


A - Altura / Height (mm) 25,0  
D - Diámetro Furo / Hole diameter (mm) 60,0

SACHS 3384 (BEARINGS)  
NWO RDL 1020  
320.250.0015  
343.254.0010  
345.981.7901

PLATEAU 380 mm PULL CLUTCH  
1423, 1519, 1520, 1620, 1624, 1921, 1924, 2020, 2023,  
2223, 2224, 2620 O-317, OM-355, OM-326, O-331,  
O-355, O-364, 1418, 1619, 1920, 2219

**RCH 5021**

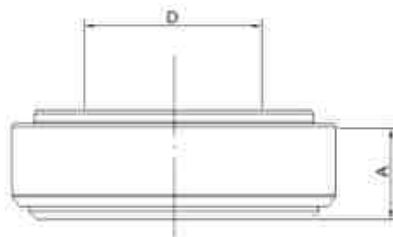


A - Altura / Height (mm) 64,0  
B - Largura para o garfo / Width Fork (mm) 91,8  
D - Diámetro Furo / Hole diameter (mm) 48,0

SACHS 3385  
NWO RDL 1021  
304.250.0315  
335.254.0010

PLATEAU 380 mm PULL CLUTCH  
BUS O-326, 364, 355, OM 355/5, TODOS, 1518,  
1618, 1623, 1918, 1920, 1923

**RCS 5021**

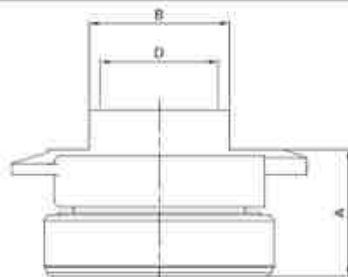


A - Altura / Height (mm) 29,50  
D - Diámetro Furo / Hole diameter (mm) 60,0

SACHS 3385 (RODAMIENTO)  
NWO RDC 1021  
304.250.0315  
335.254.0010

PLATEAU 380 mm  
BUS O-326, 364, 355, OM 355/5, ALL, 1518,  
1618, 1623, 1918, 1920, 1923

**RCH 5300**

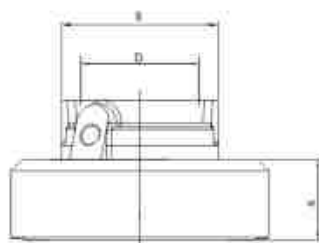


A - Altura / Height (mm) 45,0  
B - Largura para o garfo / Width Fork (mm) 49,8  
D - Diámetro Furo / Hole diameter (mm) 42,10

SACHS 3358  
NWO RDL 1300  
321.250.0515  
352.250.0515  
340.250.0215  
352.250.0115

PLATEAU 280 / 310 mm PULL CLUTCH  
BUS AND TRUCK MB 1111, OM 321 (85 CV) OVER 1984,  
MB 1113 OM-352 DESPUÉS 1987, MB 1114 OM-352 UP UNTIL 07/82  
(130 CV), MB 608 OM-314 (85 CV) ALL, O-321 OM-321,  
OM-352 (85 CV), (130 CV) HIGH SYSTEM  
1114, 1116, 1117, 1313, 1314, 1316, 1317, 1513, 1514, 1516,  
1517, 1518, 1813, 1816, 2013, 2014, 2213, 2214, 2216, 2217

### RCH 5305

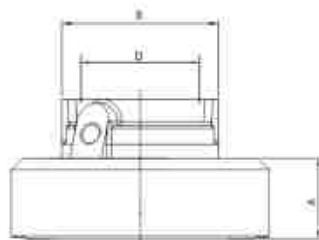


A - Altura / Height (mm) 31,50  
B - Largura para o garfo / Width Fork (mm) 55,80  
D - Diâmetro Furo / Hole diameter (mm) 42,20

SACHS 3324  
NWO RDL 1305  
002.250.4615, 000.250.4615, 001.250.9315, 381.250.0415

PLATEAU 330 mm PULL CLUTCH  
MBB 1114, 1118, 1214, 1313, 1314, 1318, 1414, 1517, 1614, 1618, 1714, 1718 (133 CV TODOS)  
1117, 1118, 1518 (168 CV AFTER 1/84), 1218, 1418, (UP UNTIL 1996), 2214, 2215, 2218, 2314, 2318, 2418  
BUS OF 1113, OF 1115, OF 1315 (136 CV), OF 1318, OF 1618, O 365, O 370, OM 366 A, OH 1315 (136 CV)  
OH 1114, OH 1118, OH 1128, OH 1214, OH 1618, OH 2418

### RCH 5305 TB

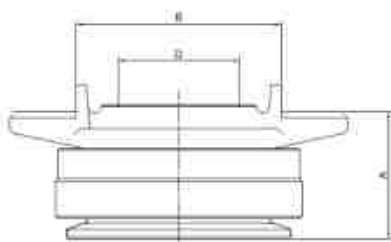


A - Altura / Height (mm) 31,50  
B - Largura para o garfo / Width Fork (mm) 55,80  
D - Diâmetro Furo / Hole diameter (mm) 42,20

SACHS 3324  
NWO RDL 1305  
000.250.4215, 000.250.4615, 000.250.9315, 381.250.0415

PLATEAU 330 mm PULL CLUTCH  
MBB 1114, 1118, 1313, 1314, 1517, 1714, 1718 (133 CV ALL)  
1117, 1118, 1518 (168 CV AFTER 1/84), 1218, 1418, (UP UNTIL 1996), 2214, 2215, 2218, 2314, 2318, 2418  
BUS OF 1113, OF 1115, OF 1315 (136 CV), OF 1318, OF 1618, O 365, O 370, OM 366 A, OH 1315 (136 CV)  
OH 1114, OH 1118, OH 1128, OH 1214, OH 1618, OH 2418

### RCH 5306

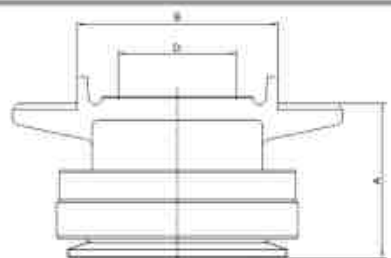


A - Altura / Height (mm) 56,0  
B - Largura para o garfo / Width Fork (mm) 91,80  
D - Diâmetro Furo / Hole diameter (mm) 54,20

SACHS 3330  
NWO RDL 1306  
001.250.0315

PLATEAU 380 mm PULL CLUTCH  
O 370 C/ MT OM 355/5 (204 CV ALL) (238 CV),  
O 370 R C/ MT OM 355/5 A (192 CV ALL), 0371, OH 1518  
OH 1418, OH 1419, OH 1520  
MAFERSA BUS M 210 CUMMINS  
MBB 1518, 1524, 1525 OM-355/6 LS1924

### RCH 5307

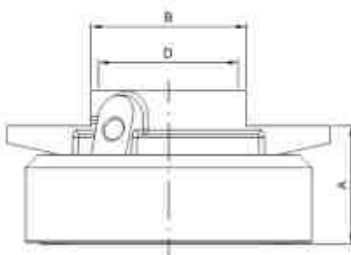


A - Altura / Height (mm) 71,0  
B - Largura para o garfo / Width Fork (mm) 91,8  
D - Diâmetro Furo / Hole diameter (mm) 54,20

SACHS 3327  
NWO RDL 1307  
000.250.1915  
000.250.2515  
000.250.7415  
000.250.7715

PLATEAU 420 mm PULL CLUTCH  
O 370, O 371 C/ MT A (285 CV ALL), 1924, 1924 A, 1929, 1930, 1625 L / LS  
1525, 1625, 1630, LS 1932, 1933, 1934, L 2225, 2325  
BUS OF 1625, OH 2325  
OM 355/6A OM 449-A (252 CV) (285 CV)

### RCH 5308

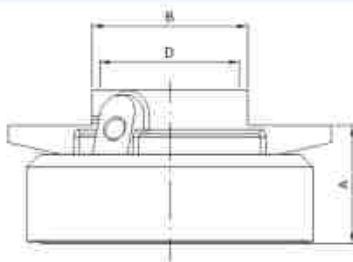


A - Altura / Height (mm) 37,80  
B - Largura para o garfo / Width Fork (mm) 49,80  
D - Diâmetro Furo / Hole diameter (mm) 42,20

SACHS 3310  
NWO RDL 1308  
000.250.1715  
000.250.3115  
000.250.3715  
000.250.4015  
308.250.7015 / 308.250.7215

PLATEAU 250 mm PULL CLUTCH  
HIDRAULIC SYSTEM 608 D, 708 D, L 608, L 708 (85 CV)  
MICRO BUS LO 608, LO 708 (1987 UP UNTIL 1989)  
VAN 408 D, 408 GD, 508 D, 508 GD  
811, 813, 911 B, 913, 1013, 1113, 1113 B, 1313, 1322, 1413, 1417, 1513, 1813, 2214, 2217, 2414

**RCS 5308 TB**

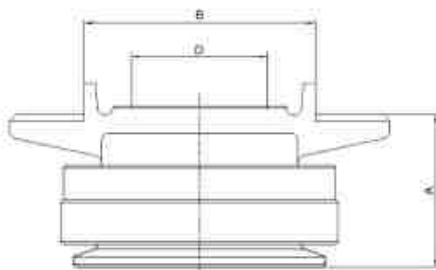


A - Altura / Height (mm) 37,80  
B - Largura para o garfo / Width Fork (mm) 49,80  
D - Diâmetro Furo / Hole diameter (mm) 42,20

SACHS 3310 (ENCANECADO)  
NWO RDL 1308  
000.250.1715  
000.250.3115  
000.250.3715  
000.250.4015  
308.250.7015 / 308.250.7215

PLATEAU 250 mm PUSH CLUTCH  
HIDRAULIC SYSTEM 608 D, 708 D, L 608, L 708 (85 CV)  
BUS LO 608, LO 708 (1987 UP UNTIL 1989)  
VAN 408 D, 408 GD, 508 D, 508 GD  
811, 813, 911 B, 913, 1013, 1113, 1113 B, 1313, 1322, 1413,  
1417, 1513, 1813, 2214, 2217, 2414

**RCH 5311**

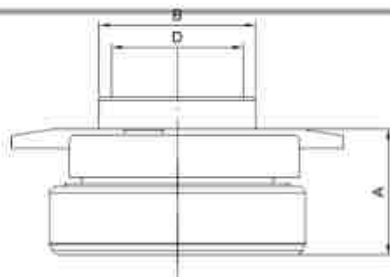


A - Altura / Height (mm) 62,2  
B - Largura para o garfo / Width Fork (mm) 91,8  
D - Diâmetro Furo / Hole diameter (mm) 54,20

SACHS 3329  
NWO RDL 1311  
000.250.7615

PLATEAU 420 mm PUSH CLUTCH  
O 370 RSD, O 371 RSD, C/MT OM 355/6 LA, OM 326, LS 1932,  
1933, 1934 (340 CV)

**RCH 5312**

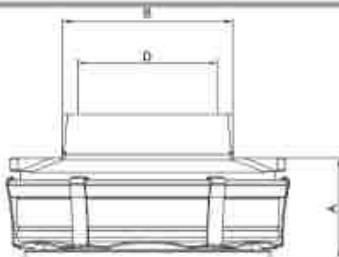


A - Altura / Height (mm) 41,0  
B - Largura para o garfo / Width Fork (mm) 50,0  
D - Diâmetro Furo / Hole diameter (mm) 42,10

NWO RDL 1312  
340.250.0210, 352.250.0115, 352.250.0515, 321.250.1315,  
345.250.0215

608, 709, 808, 809, 811, 813, 911 B, 913, 1013 B, 1113 OM 352  
1316, 1317, 1318, 1516, 1518, 1613, 1816, 2013, 2014,  
2216, 2217  
PLATEAU LOW LEVER 310 mm PUSH  
CLUTCH

**RCH 5320 AC**

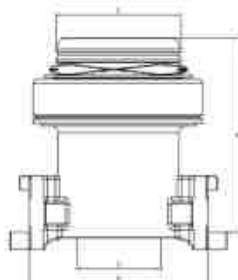


A - Altura / Height (mm) 40,0  
B - Largura para o garfo / Width Fork (mm) 65,80  
D - Diâmetro Furo / Hole diameter (mm) 54,60

SACHS 3325  
NWO RDL 1320  
EATON 125807  
001.250.2215  
000.250.7015

PLATEAU 350 / 362 / 380 / 395 mm PUSH CLUTCH  
TRUCK AND BUS MB 1117, 1217, 1218, 1319, 1417,  
1418, 1419, 1620, 1621, 1717, 1720, 1721, 1723-S, OF 1420,  
OF 1721, OF 1722, L 1620, L 1622, L 1720, L 1718 M CAJA ZF  
BUS OF/OH 1417, 1418 ELETRONIC (PLATEAU EATON)  
TRUCK AND BUS OM 366 LA  
O 371, OF/OH 1113, 1318, 1420, 1421, 1521, 1620, 1621, 1622, 1721  
OM-924-LA ELETRONIC

**RCH 5321 AC**

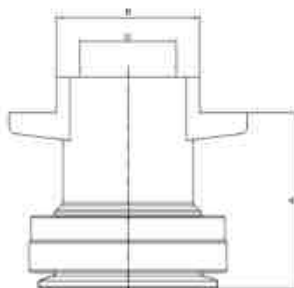


A - Altura / Height (mm) 137,0  
B - Largura para o garfo / Width Fork (mm) 127,50  
C - Diâmetro para cada membrana / Diameter of spring membrane (mm) 90,0  
D - Diâmetro Furo / Hole diameter (mm) 60,50

SACHS 3345 / 3346  
NWO RDL 1321  
EATON 125653  
001.250.9215  
002.250.3215

PLATEAU SACHS 430 mm FAST COUPLING PULL  
CLUTCH  
TRUCK AND BUS LS 1935 DEPUÉS 06/94, 1941 AFTER 07/94,  
O 371 RS, RSD WITH MOTOR O 447 LA  
LS 1634, 1735, 1935, 1938, 1940, 1941, 1945, 2435, 2629,  
2635, 2637 (SIMPLE CLUTCH)  
APPLICATION SET KTA 5106

### RCH 5324 AC

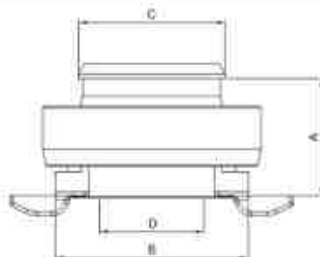


A - Altura / Height (mm) 97,0  
B - Largura para o garfo / Width Fork (mm) 79,8  
D - Diâmetro Furo / Hole diameter (mm) 54,50

SACHS 3383  
NWO RDL 1324  
001.250.0715

PLATEAU 420 mm PUSH CLUTCH  
LS 1630, APÓS 08/93, MB 1630, 1632, OM 449  
1518, 1520, 1524, 1525, 1625, LS 1924, 1929, 1930, 1932,  
1933, 1934, L 2225, 2325  
BUS O 370, O 371 RS

### RCH 5326

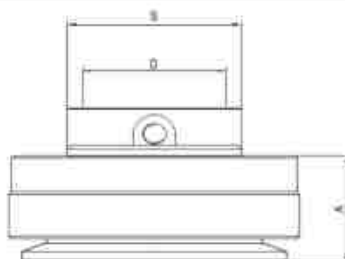


A - Altura / Height (mm) 48,0  
B - Largura para o garfo / Width Fork (mm) 77,90  
C - Diâmetro para mola membrana / Diameter of spring membrane (mm) 60,0  
D - Diâmetro Furo / Hole diameter (mm) 42,40

SACHS 3326  
NWO RDL 1326  
000.250.9515  
001.250.0815

PLATEAU 280 / 310 mm PULL CLUTCH  
OM 364 LA (140 CV), 1014, 1214 AFTER 1987, 608, 709, 712,  
809, 912, 914  
LN 710, LO 610, LO 712, 715, 812, 814, 914  
1214 BUS OM 364 LA, 710 (122 CV) AFTER 2001  
608, 708, OM 314, (85 CV) MECHANIC ALL.

### RCH 5328

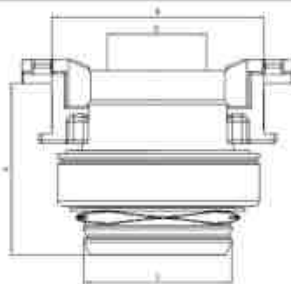


A - Altura / Height (mm) 40,0  
B - Largura para o garfo / Width Fork (mm) 65,80  
D - Diâmetro Furo / Hole diameter (mm) 54,20

NWO RDL 1328  
000.250.7015

O 371 U 12/92, OF/OH 1113 A, OH 1219 OH 1117, OH 1318,  
OH 1319, OH 1417, OH 1419, OH 1517, OH 1621 MOTOR  
OM 366 A, OM 366 LA

### RCH 5331



A - Altura / Height (mm) 101,0  
B - Largura para o garfo / Width Fork (mm) 127,50  
C - Diâmetro para mola membrana / Diameter of spring membrane (mm) 90,0  
D - Diâmetro Furo / Hole diameter (mm) 54,50

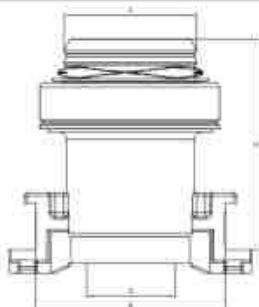
NWO RDL 1331  
001.250.0915, 001.250.4715, 001.250.6215, 001.250.8415  
001.250.9715, 001.250.8115, 001.250.6315

PLATEAU 430 mm FAST COUPLING PULL

O 303, 304, 404 - OH 1627, 1222,  
1224, 1226, 1227, 1231, 1234, 1422, 1426, 1429, 1627, 1929, 1935,  
1945, 2024, 2031, 2422, 2426, 2427, 2429, 2433, 2434, 2522, 2524,  
2527, 2531, 2544, 2629, 2631, 2635, 2644, 2648, 2650, 3229, 3529,  
3535, 3538, 3548, 3550, 4635, 4644, 4645, 4648, 4850, 5035

APPLICATION SET KTA 5106

### RCH 5332 AC



A - Altura / Height (mm) 137,0  
B - Largura para o garfo / Width Fork (mm) 127,50  
C - Diâmetro para mola membrana / Diameter of spring membrane (mm) 90,0  
D - Diâmetro Furo / Hole diameter (mm) 60,90

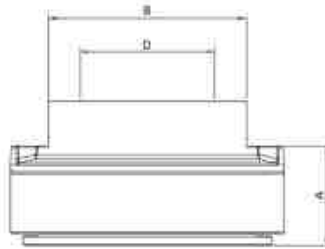
NWO RDL 1332  
EATON 125653  
001.250.0515, 001.250.4815, 001.250.6415, 001.250.8615  
001.250.9815, 001.250.7915, 001.250.6515

PLATEAU 430 mm FAST COUPLING PULL

BUS O 400, O 500, OM 457 LA, OH 1628, 1635, 1636  
O 350 - OH 1634, 1227, 1234, 1424, 1719, 1733, 1735, 1824, 1827,  
1831, 1834, 1838, 1844, 1850, 1853, 1929, 1935, 1948, 2024, 2429,  
2435, 2448, 2524, 2527, 2529, 2531, 2534, 2535, 2538

APPLICATION SET KTA 5106

### RCH 5337

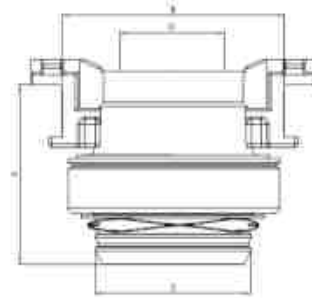


A - Altura / Height (mm) 40,0  
B - Largura para o garfo / Width Fork (mm) 79,8  
D - Diâmetro Furo / Hole diameter (mm) 60,80

SACHS 3337, 3338  
NWO RDL 1337  
001.250.0415  
001.250.4515

PLATEAU 380 mm DOUBLE PUSH CLUTCH  
TRUCK AND BUS LS 1935, 1936 UP UNTIL 06/94 (354 CV)  
(408 CV), 1941 UP UNTIL 06/94, O371 RS, RSD MT OM 447 LA DISC  
DOUBLE 2431, 2438 MT, OM-441, 2625, 2635 O-371 RS,  
RSL UP UNTIL 12/93

### RCH 5338 AC

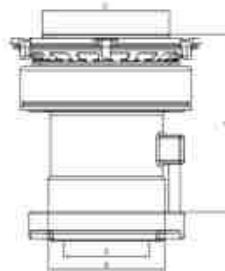


A - Altura / Height (mm) 101,0  
B - Largura para o garfo / Width Fork (mm) 127,50  
C - Diâmetro para mola membrana / Diameter of spring membrane (mm) 90,0  
D - Diâmetro Furo / Hole diameter (mm) 60,80

SACHS 3390  
NWO RDL 1338  
001.250.0615, 001.250.4914, 001.250.6615, 001.250.8015  
001.250.6815, 001.250.6715

PLATEAU 430 mm FAST COUPLING PULL CLUTCH  
BUS O 303, O 350, O 403, O 404  
TRUCK 1744, 1748, 1844, 1850, 1853, 1948, 2044, 2050,  
2448, 2544, 2550, 2553, 2635, 2644, 2648, 2650, 3248, 3250,  
3255, 3538, 3544, 3548, 3550, 5248 (ARGENTINO)  
NBB 2638  
APPLICATION SET KTA 5106

### RCH 5356 AC



A - Altura / Height (mm) 124,60  
B - Largura para o garfo / Width Fork (mm) 82,50  
C - Diâmetro para mola membrana / Diameter of spring membrane (mm) 90,0  
D - Diâmetro Furo / Hole diameter (mm) 60,80

SACHS 3377  
NWO RDL 1356  
EATON 125634 / 125635 / VALEO 10203  
002.250.4115, 002.250.4715, 002.250.9815, 002.250.6715  
003.250.5915

PLATEAU SACHS / VALEO 430 mm SIMPLE PULL CLUTCH  
TRUCK AND BUS MB 1634, OM 457 LA 1938,  
OM 501 LA 1831, 1835 L, S, LS, 1840, 1843, 2031 S, AS,  
ACTROS 2038, 2525, 2531, 2540, 2543, 2631 L ACTROS,  
AXOR 2035 4X2, 2040 4X2, 2544 6X2 AXOR,  
NBB LS 1935, 1941, OM 447 LA, LS 1944-S, 2036, 2041, 2536,  
2541, 2544, ATRON 2729 OM - 457 LA PLATAFORM  
TILTING AND CONCRETE MIXER - APPLICATION SET KTA 5102

### RCH 5378 AC

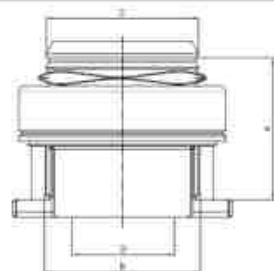


A - Altura / Height (mm) 86,60  
B - Largura para o garfo / Width Fork (mm) 82,50  
C - Diâmetro para mola membrana / Diameter of spring membrane (mm) 90,0  
D - Diâmetro Furo / Hole diameter (mm) 60,80

SACHS 3388  
NWO RDL 1378  
001.250.0615

PLATEAU 380 / 400 / 430 mm DOUBLE PULL CLUTCH  
LOW AXOR AXOR OM-926-LA  
MB 2638 S, 2638 OM, 457 LA (380 CV), AXOR 2640, 2641 6X4,  
2644 6X4, 2841  
HIGHWAY, AXOR 3340, 3341 6X4, 3344 6X4, AXOR 4140,  
4141 6X4, 4144 6X4 TODOS OM-457-LA  
ACTROS 2546, 2846, 4844 K  
MBB LS 1938, OM 457 LA  
APPLICATION SET KTA 5102

### RCH 5390 AC

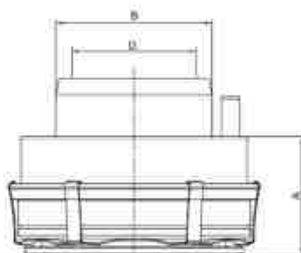


A - Altura / Height (mm) 82,50  
B - Largura para o garfo / Width Fork (mm) 90,50  
C - Diâmetro para mola membrana / Diameter of spring membrane (mm) 90,0  
D - Diâmetro Furo / Hole diameter (mm) 60,80

SACHS 3390  
NWO RDL 1424  
EATON 125946  
002.250.8315

PLATEAU 395 / 430 mm FAST COUPLING  
PULL CLUTCH  
BUS O 500 R, OM 926 LA MT ELECTRONIC OVER 09/03,  
O 500 RSD OM 457 LA OVER 09/03  
APPLICATION SET KTA 5106

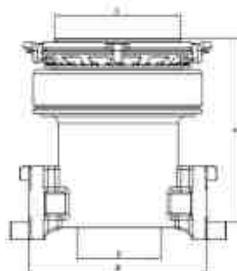
### RCH 5397 AC



A - Altura / Height (mm) 52,0  
B - Largura para o garfo / Width Fork (mm) 68,50  
D - Diâmetro Furo / Hole diameter (mm) 50,50

SACHS 3309  
NWO RDL 1397  
EATON 125806  
001.250.9915, 002.250.6515, 002.250.0015, 002.250.9915  
PLATEAU 350 / 362 / 395 mm HIGH PULL CLUTCH BEARING  
ACCELO 1016, 815, 915 OM-904-LA ELECTRONIC  
MBB TRUCK/ BUS OM 366, 1420, 1620, 1720, OF 1420,  
1521, 1620, 1721, OH 1621 LE, 1218, 1218 C, 1318 C, 1418 C,  
1718 C  
(ELECTRONIC) OM 904 LA  
ATEGO OM-366-LA, 1419, 1719  
ACTRON 1319, OF 1417, OF 1418, OH 1417, OH 1418, OH 1518  
(ELECTRONIC) MICRO BUS LO 915, LO 916  
TRUCK AND BUS 1620, 1622, 1725, 1728 (ELECTRONIC)  
OM-906-LA ELECTRONIC OM-924 LA

### RCH 5635



A - Altura / Height (mm) 129,0  
B - Largura para o garfo / Width Fork (mm) 127,50  
C - Diâmetro para mola membrana / Diameter of spring membrane (mm) 80,0  
D - Diâmetro Furo / Hole diameter (mm) 60,90

### EATON 125635

PLATEAU 430 mm PULL CLUTCH  
MB LS-1935 O-447 LA (354 CV) GEARSHIFT ZF  
MB LS-1941 OM-447 LA (408 CV) GEARSHIFT ZF  
APPLICATIONN SET LICA KIT KTA 5102

### RCH 5654



A - Altura / Height (mm) 123,50  
B - Largura para o garfo / Width Fork (mm) 82,50  
C - Diâmetro para mola membrana / Diameter of spring membrane (mm) 90,0  
D - Diâmetro Furo / Hole diameter (mm) 60,90

### EATON 125654

PLATEAU 430 mm FAST COUPLING PULL CLUTCH  
BUS 0-400 RS /D/E, OM-457 LA GEARSHIFT ZF  
BUS 0-500 R/RS/RSD, OM-926 GEARSHIFT ZF  
APPLICATION SET KTA 5106

# HIDRAULIC ACTUATOR MBB

## REFERENCE/APPLICATION

### RCY 7843



SACHS 3361  
NWO RDL 1375  
002.250.6615, 002.250.5115  
VKCH 4843  
TRW RCA 00100

712 C, 914 C, 915 C, 1215, 1218, 1315, 1318, 1620, 1714  
ELECTRONIC OF 1414  
ATEGO 1315, 1317, 1318, 1418, OM - 366 - A 366 - LA

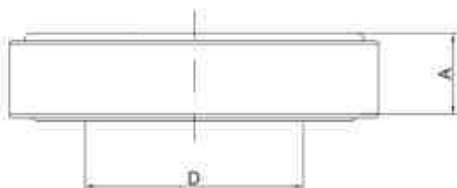
### RCY 7844



002.254.2508  
002.250.6615  
VKCH 4844

SPRINTER 311, 313, 413 CDI ELECTRONIC  
ACCELO 715

**RCS 5015**

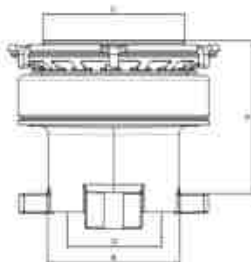


A - Altura / Height (mm) 25,0  
D - Diâmetro Furo / Hole diameter (mm) 69,85

133.011 - 215.131  
NWO RDS 1015 (ONLY BEARINGS)  
FRAG 563147 A

B 75, B 76, B 110, B 111, BR 115, BR 116, K 112, K 113,  
L75, L76, L 110, L 111, S 112, 75, 76, 100, 110, 111, 112

**RCH 5314 AC**

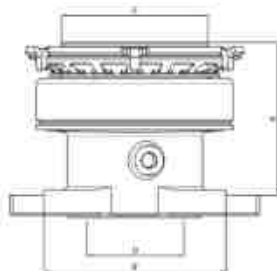


A - Altura / Height (mm) 95,50  
B - Largura para o garfo / Width Fork (mm) 85,50  
C - Diâmetro para mola membrana / Diameter of spring membrane (mm) 90,0  
D - Diâmetro Furo / Hole diameter (mm) 60,80

SACHS 3353  
NWO RDL 1314  
1.386.160  
1.393.163  
132.1260  
382.413

PLATEAU SACHS 430 mm PULL CLUTCH 5/6 MARCH  
TRUCK AND BUS K 113, S 113  
R 112 DSC 11/14 ALL, TR 112, TR 142, TR 113 DSC 11/14,  
DSC 11/41 113 SERIE  
R 142, R 143, T 112, T 113  
APPLICATION SET KTA 5102

**RCH 5329 AC**

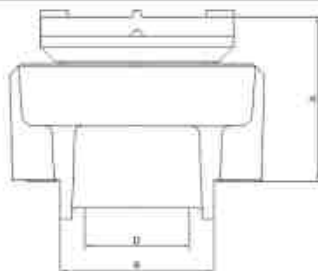


A - Altura / Height (mm) 92,0  
B - Largura para o garfo / Width Fork (mm) 116,50  
C - Diâmetro para mola membrana / Diameter of spring membrane (mm) 90,0  
D - Diâmetro Furo / Hole diameter (mm) 60,80

SACHS 3352  
NWO RDL 1329  
EATON 125708  
1.319.344, 1.393.161, 1.321.2155, 1.545.062, 1.407.430

PLATEAU EATON / SACHS 430 mm PULL CLUTCH  
7/8 MARCH  
TRUCK P 93 (ARGENTINE)  
TRUCK R 113, T 113, TH 113, TH 143, R 143  
BUS S 113 ...1996  
APPLICATION SET KTA 5102

**RCH 5372**

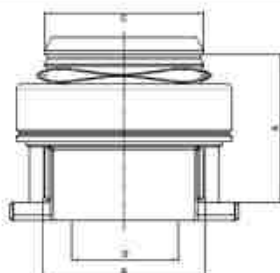


A - Altura / Height (mm) 84,0  
B - Largura para o garfo / Width Fork (mm) 79,8  
D - Diâmetro Furo / Hole diameter (mm) 60,0

SACHS 3375 / 3075  
NWO RDL 1372  
352.750  
1.367.604

PLATEAU SACHS / VALEO 420 mm  
PUSH CLUTCH  
T 112, R 112, R 142, R 143 DSC 11/14 ALL  
K 113 DSC 5/6 ALL MARCH S 112, 113, L 113, DSC 11  
5/6 ALL MARCH  
K 112, K 113, S 112, S 113, BR-116 DN/DS-11

**RCH 5422 AC**



A - Altura / Height (mm) 82,50  
B - Largura para o garfo / Width Fork (mm) 90,50  
C - Diâmetro para mola membrana / Diameter of spring membrane (mm) 90,0  
D - Diâmetro Furo / Hole diameter (mm) 63,20

SACHS 3350  
NWO RDL 1422  
EATON 125709  
1.728.165, 1.499.770, 1.479.576, 1.749.125, 1.851.631

PLATEAU EATON / SACHS / VALEO 430 mm  
FAST COUPLING PULL CLUTCH  
P 94, P 114, P 124, R 114, R 124, T 114, 124  
BUS K 124, K 94, L 94  
P-230-250-270-310-340-360-420  
K-270, K-310, K-340, K-380, K-420  
G-380, 400, 420, 440, 470, 480  
R-440, 470, 500, 560, 620  
APPLICATION SET KTA 5106



# SCANIA HOUSINGS

## TECHNICAL DRAWING

## REFERENCE/APPLICATION

RCH 5522 AC



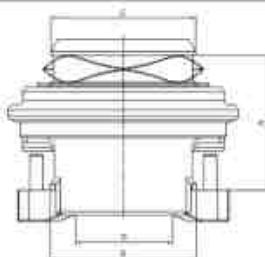
RCH 5522



A - Altura / Height (mm) 62,50  
 B - Largura para o garfo / Width Fork (mm) 90,50  
 C - Diâmetro para mola membrana / Diameter of spring membrane (mm) 90,0  
 D - Diâmetro Furo / Hole diameter (mm) 60,60

SCANIA TRUCK S 230, HB 4/2 6/2, F 250/310  
 VALEO SYSTEM 430 mm  
 VALEO 1493990  
 URBAN AND HIGHWAY FROM MOTOR

RCH 5722 AC



A - Altura / Height (mm) 79,50  
 B - Largura para o garfo / Width Fork (mm) 91,0  
 C - Diâmetro para mola membrana / Diameter of spring membrane (mm) 90,0  
 D - Diâmetro Furo / Hole diameter (mm) 63,20

VALEO 830010

SCANIA 1499770

SCANIA TRUCK GENERATION 5  
 VALEO SYSTEM  
 BUS K 94 / K 124 / K 310  
 TRUCK P 94 / P 114 / T 114 / T 124 / P 124  
 R 124

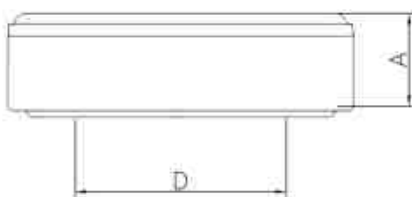
APPLICATION SET KTA 5113

# TOYOTA HOUSINGS

## TECHNICAL DRAWING

## REFERENCE/APPLICATION

RCS 5007

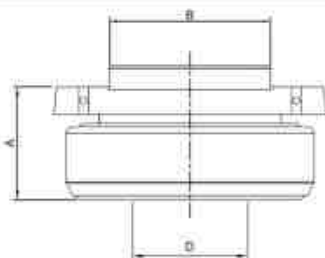


A - Altura / Height (mm) 21,80  
 D - Diâmetro Furo / Hole diameter (mm) 50,0

NWO RDS 1007  
 90.023.6301  
 VKC 2044  
 FRAG 200 216

TOYOTA BANDEIRANTES OVER 94

RCL 5007



A - Altura / Height (mm) 36,9  
 B - Largura para o garfo / Width Fork (mm) 52,8  
 D - Diâmetro Furo / Hole diameter (mm) 38,0

NWO RDL 1007  
 90.023.6301

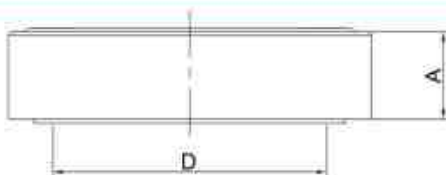
BEARING WITH HOUSING TOYOTA  
 BANDEIRANTES OVER 94  
 PUSH CLUTCH

# VALTRA VALMET

## TECHNICAL DRAWING

## REFERENCE/APPLICATION

RCS 5019

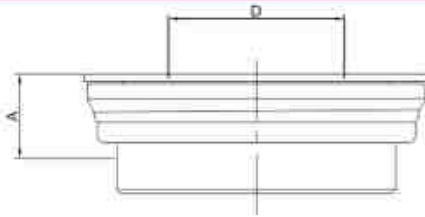


A - Altura / Height (mm) 22,0  
 D - Diâmetro Furo / Hole diameter (mm) 55,0

NWO RDS 1019  
 164.480  
 164.481

86, 110, UP UNTIL 99 / 110 / 118 / 128 BF 65 / BF 75  
 VALTRA 685 / 685C / 785 / 785C / BH-180  
 ONLY BERARINGS

RCH 5200



A - Altura / Height (mm) 23,0  
D - Diâmetro Furo / Hole diameter (mm) 62,0

NWO RDL 1600  
817.812.00

PLATEAU SACHS 325, 330, 345 mm  
VALTRA 685, 685-C, 785, 785-C, 880, BH-180  
CAFEIRO - 4X4 - 885, 990 4X4 BH  
BM - VT 1380, 1680, 1880, 1580, 1280, 1780 / R

**VOLVO**  
HOUSINGS

DISEÑO TÉCNICO

REFERENCIA / APLICACION

RCH 5315

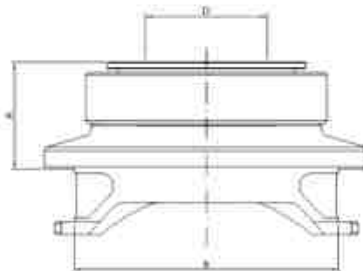


A - Altura / Height (mm) 84,30  
B - Largura para o garfo / Width Fork (mm) 134,0  
C - Diâmetro para mola membrana / Diameter of spring membrane (mm) 80,0  
D - Diâmetro Furo / Hole diameter (mm) 58,50

SACHS 3355  
NWO RDL 1315  
165.5289  
166.8333  
166.9912  
319.2226

PLATEAU 430 mm PULL CLUTCH  
B 58 TD 101 GC, B58 TD 101 C OVER 91  
B 10 M THD 101 KC OVER 91 - B 10M 6X2 THD  
101 MC, NL 12/400  
APPLICATION SET KTA 5102

RCH 5316

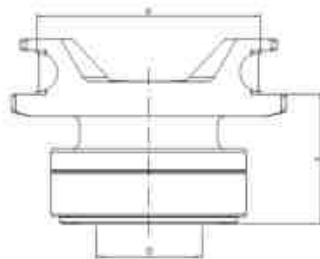


A - Altura / Height (mm) 51,0  
B - Largura para o garfo / Width Fork (mm) 125,80  
D - Diâmetro Furo / Hole diameter (mm) 66,10

SACHS 3368  
NWO RDL 1316  
267.156, 152.7693, 165.5316, 352.221, 811.2167, 811.2168,  
811.2174

PLATEAU 350 / 380 mm PUSH CLUTCH DOUBLE  
N 10 HTD 101 G 275 CV OVER 1986, N 12 TD 120/121  
HASTA 89, B 10 HIGHWAY  
D 100 B - F7 / F10 / F12  
F 88 / F 89  
TRUCK FB / G / N7 / TD 100 / TD 120 / TD 121

RCH 5317

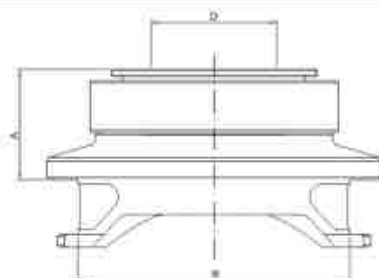


A - Altura / Height (mm) 72,50  
B - Largura para o garfo / Width Fork (mm) 125,80  
D - Diâmetro Furo / Hole diameter (mm) 58,20

SACHS 3374  
NWO RDL 1317  
165.5287

PLATEAU 420 mm PUSH CLUTCH  
B 58 M THD 100 EC 250 / 275 CV ALL,  
URBAN BUS OVER 04/91B 10 OVER 04/91

RCH 5318

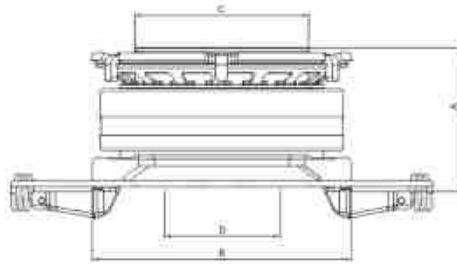


A - Altura / Height (mm) 54,50  
B - Largura para o garfo / Width Fork (mm) 125,80  
D - Diâmetro Furo / Hole diameter (mm) 58,20

SACHS 3372  
NWO RDL 1318  
165.5288

PLATEAU 350 mm DOUBLE CLUTCH (BI DISC)  
PUSH  
B 10 M BUS HIGHWAY 87 A 03/91  
THD 101 KC 1987 OVER 01/91

**RCH 5319**

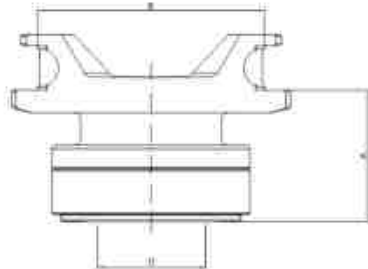


A - Altura / Height (mm) 74,30  
B - Largura para o garfo / Width Fork (mm) 133,80  
C - Diâmetro para mola membrana / Diameter of spring membrane (mm) 90,0  
D - Diâmetro Furo / Hole diameter (mm) 66,80

**SACHS 3060, 3360**  
**NWO RDL 1319**  
167.2944, 165.5843, 166.8921, 166.9832, 319.2222  
569.157, 205.69157, 360.410

PLATEAU 380 / 400 mm DOUBLE CLUTCH (BI DISC) PULL  
NL 10, N 12, FH 12 6X4 GLOBETROTTER D 12 OVER 380 UNTIL 96 NL  
HARD OVER 2006 D-12-D  
TRUCK FH FM NH 12 FM-440 FM-480  
APPLICATION SET KTA 5103

**RCH 5322**

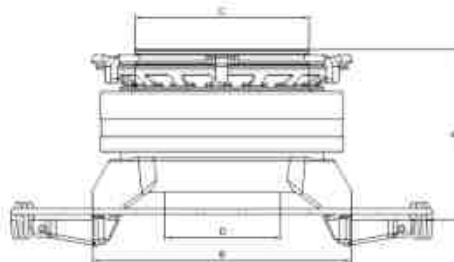


A - Altura / Height (mm) 72,50  
B - Largura para o garfo / Width Fork (mm) 125,80  
D - Diâmetro Furo / Hole diameter (mm) 66,10

**SACHS 3386**  
**NWO RDL 1322**  
152.7695

PLATEAU 420 mm, PUSH CLUTCH  
N 10  
TRUCK NH TD 101 G (275 CV) 01/80 A 12/84

**RCH 5325**

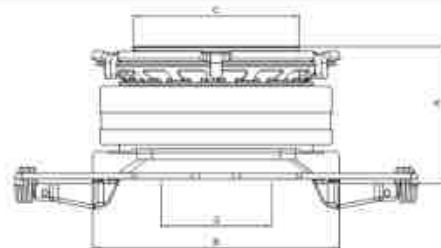


A - Altura / Height (mm) 87,30  
B - Largura para o garfo / Width Fork (mm) 133,80  
C - Diâmetro para mola membrana / Diameter of spring membrane (mm) 90,0  
D - Diâmetro Furo / Hole diameter (mm) 66,80

**SACHS 3363**  
**NWO RDL 1325**  
**EATON 125637**  
165.5825, 165.5732, 166.7258, 166.8923, 166.9833, 167.2847,  
167.2946, 319.2218, 319.2217, 319.2223, 811.2169

PLATEAU 430 mm (SIMPLE CLUTCH) PULL  
FH 12 4X2 ALL, FH / FM / NH 12 4X2 E  
6X2 GLOBETROTTER TILL 2002, TD 122,  
TD 101 B 12 B, B 12 R, 4X2 E 6X4  
HIGHWAY TILL 06/07 CX ZF  
NH 12 4X2 6X2 OVER 2003  
APLICA KIT KTA 5102

**RCH 5352**

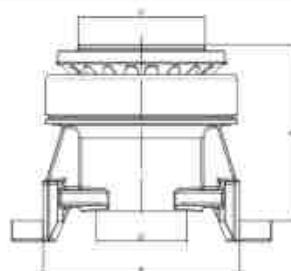


A - Altura / Height (mm) 77,0  
B - Largura para o garfo / Width Fork (mm) 133,80  
C - Diâmetro para mola membrana / Diameter of spring membrane (mm) 90,0  
D - Diâmetro Furo / Hole diameter (mm) 58,50

**SACHS 3365**  
**NWO RDL 1352**  
166.8930  
166.8938  
167.2948  
319.2224

GEARSHIFT ZF PLATEAU 430 mm PULL  
CLUTCH  
MM B7, B 10 B, B10 BLE B10 M, B 12 MOTOR TD 73 E -  
B7 R  
ALL, FS 7  
APPLICATION SET KTA 5102

**RCH 5360 AC**

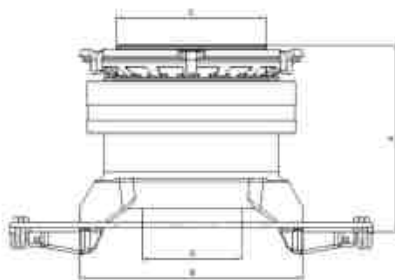


A - Altura / Height (mm) 112,0  
B - Largura para o garfo / Width Fork (mm) 124,0  
C - Diâmetro para mola membrana / Diameter of spring membrane (mm) 80,0  
D - Diâmetro Furo / Hole diameter (mm) 57,30

**SACHS 3359**  
**NWO RDL 1360 AC**

PLATEAU 380 / 395 mm GEARSHIFT AUTO CENTER  
PULL CLUTCH  
VM 17, VM 23 MWM 6.10 ALL, VM 210 4X2,  
6X2 GEARSHIFT EATON FT 0706 CVM 260 4X2,  
6X2 GEARSHIFT EATON FT 0909 B  
VM 260 R  
APPLICATION SET KTA 5101

**RCH 5394**

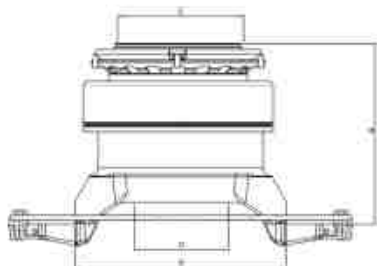


A - Altura / Height (mm) 111,50  
 B - Largura para o garfo / Width Fork (mm) 133,80  
 C - Diâmetro para mola membrana / Diameter of spring membrane (mm) 90,0  
 D - Diâmetro Furo / Hole diameter (mm) 66,80

**SACHS 3308**  
**NWO RDL 1394**  
**EATON 125643**  
**167.2964, 20.569.161, 319.2221**

**PLATEAU 430 mm EATON / SACHS GEARSHIFT  
 VOLVO VT PULL CLUTCH**  
**FH 12 4X2 E 6X2 GLOBETROTTER UNTIL 2002- NH 12 4X2 E 6X2  
 OVER 2003 FM**  
**APPLICATION SET KTA 5102**

**RCH 5396 AC**

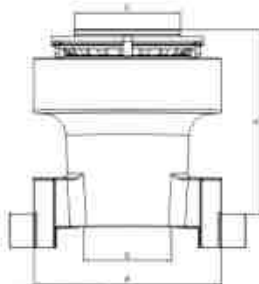


A - Altura / Height (mm) 114,40  
 B - Largura para o garfo / Width Fork (mm) 133,80  
 C - Diâmetro para mola membrana / Diameter of spring membrane (mm) 90,0  
 D - Diâmetro Furo / Hole diameter (mm) 66,80

**NWO RDL 1396**  
**EATON 125641**  
**20722523**

**PLATEAU 395 mm PULL CLUTCH**  
**VM 310 4X2 6X4 ALL**  
**APPLICATION SET KTA 5101**

**RCH 5563**

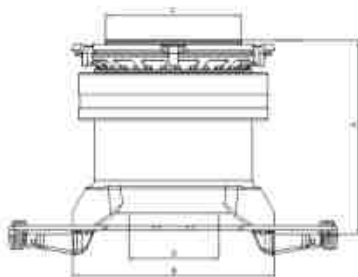


A - Altura / Height (mm) 121,0  
 B - Largura para o garfo / Width Fork (mm) 123,60  
 C - Diâmetro para mola membrana / Diameter of spring membrane (mm) 70,0  
 D - Diâmetro Furo / Hole diameter (mm) 57,5

**EATON 125563 / 125715**

**PLATEAU 365 mm GEARSHIFT  
 PULL CLUTCH**  
**VM 17 206 CV, VM 23 240 CV, VM 210 4X2 R, VM 210 6X2 R,  
 VM 260 4X2, VM 260 6X2**  
**APPLICATION SET KTA 5105**

**RCH 5567**



A - Altura / Height (mm) 128,0  
 B - Largura para o garfo / Width Fork (mm) 133,80  
 C - Diâmetro para mola membrana / Diameter of spring membrane (mm) 90,0  
 D - Diâmetro Furo / Hole diameter (mm) 66,80

**SACHS KIT 6295**

**PLATEAU 395 mm PULL CLUTCH SACHS  
 GEARSHIFT EATON ET 8908 LL**  
**VM 310 4X2 6X4 MWM 7 A**  
**310 VT, 2214 B ALL**  
**APPLICATION SET KTA 5101**

**RCH 5655**

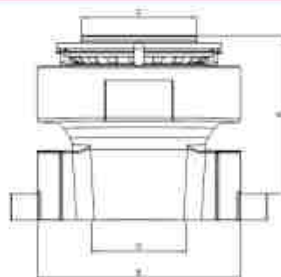


A - Altura / Height (mm) 86,30  
 B - Largura para o garfo / Width Fork (mm) 133,80  
 C - Diâmetro para mola membrana / Diameter of spring membrane (mm) 90,0  
 D - Diâmetro Furo / Hole diameter (mm) 66,80

**EATON 125855**

**PLATEAU 430 mm FAST COUPLING PULL CLUTCH**  
**BUS B 12 B4X2 E 6X2 TD 122 FL,**  
**B 12 R 4X2 E 6X2 TD 122 FL GEARSHIFT ZF**  
**APPLICATION SET KTA 5106**

**RCH 5716**



A - Altura / Height (mm) 95,50  
B - Largura para o garfo / Width Fork (mm) 123,60  
C - Diâmetro para mola membrana / Diameter of spring membrane (mm) 70,0  
D - Diâmetro Furo / Hole diameter (mm) 57,5

**EATON 125716**

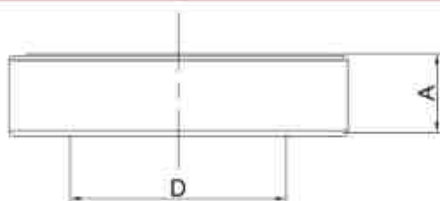
PLATEAU 395 mm GEARSHIFT PULL CLUTCH  
BUS B 27 MWM  
TRUCK VM 270 6X4 6X2, VM 260 6X4 4X2  
APPLICATION SET KTA 5105

**VOLKSWAGEN**  
**HOUSINGS**

**TECHNICAL DRAWING**

**REFERENCE/APPLICATION**

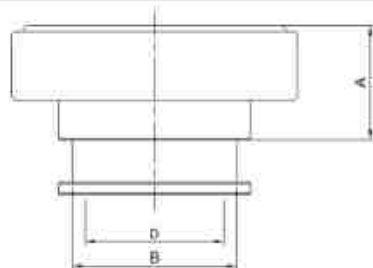
**RCS 5009**



D - Diâmetro Furo / Hole diameter (mm) 52,40  
A - Altura / Height (mm) 20,0

**SACHS 3367**  
**NWO RDS 1009**  
**2.991.380**  
**FAG 526468**  
**6.80, 6.90, 6.90 S, 7.90 S**

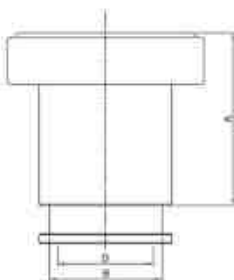
**RCL 5035**



A - Altura / Height (mm) 36,70  
B - Largura para o garfo / Width Fork (mm) 52,80  
D - Diâmetro Furo / Hole diameter (mm) 44,60

**SACHS 3307 / 3367**  
**NWO RDC 1035**  
**EATON 125802**  
**82TU7548-A**  
**TEG 141.165**  
PLATEAU 325 / 330 mm PULL CLUTCH  
7-100, 8-100, 8-140 MWM 4.10 NA, 8-150, 9-150 - 12-140 H,  
12-140 T MWM 4.10 TCA, 12-160, 13-130, 14-140  
8140 / 8150 / 9150  
V.W 6.80, 6.90, 6.140, 7.110, 7.120, 7.140, 8.120-L80, 12.140,  
13.130, 13.150, 14.140 MICRO BUS 8.120 OD  
MWM 13"

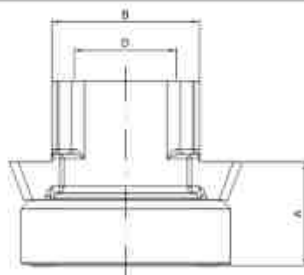
**RCL 5037**



A - Altura / Height (mm) 80,0  
B - Largura para o garfo / Width Fork (mm) 52,80  
D - Diâmetro Furo / Hole diameter (mm) 44,60

**SACHS 3373**  
**NWO RDC 1037**  
**EATON 125804**  
**2 SK 141.165**  
**Xc457548 AA**  
PLATEAU 325 / 330 mm PULL CLUTCH  
8-150 EOD, 9-150 EOD CUMMINS INTERACT 4.0 OVER 2004  
CUMMINS 13"

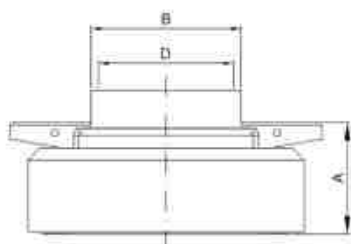
**RCH 5040**



A - Altura / Height (mm) 45,0  
B - Largura para o garfo / Width Fork (mm) 64,80  
D - Diâmetro Furo / Hole diameter (mm) 44,60

**SACHS 3040**  
**EATON 125919**  
**OR 220 141165**  
**2PO 141165**  
V.W. 5150, 8160, 9160, 8160 OD, 9160 OD, 3.8 2012 >...  
MTR CUMMINS ISF EURO 5  
TRANSMISSION ZF S 5420 HD  
APPLICATION PLATEAU 1085 SACHS  
MICRO BUS 8160 OD, 9160 OD  
PLATEAU 330 mm PULL CLUTCH

**RCH 5323**

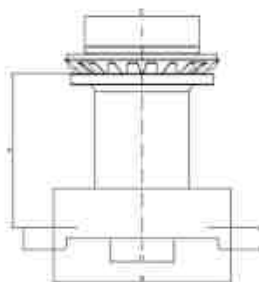


A - Altura / Height (mm) 36,50  
B - Largura para o garfo / Width Fork (mm) 49,80  
D - Diâmetro Furo / Hole diameter (mm) 44,50

SACHS 3362  
NWO RDL 1323  
2T2 141.265  
2T2 141.265 H  
T 13.141.161

PLATEAU 325 mm PUSH CLUTCH  
15-180, 17-250 CONSTELLATION 11-130, 13-130, 11-140, 1160,  
7-110, 8100, 8200, 12140, 12140 BT, 12140 H, 12140 T,  
12180, 13130, 13150 E, 13170, 13170 E, 13180, 13180 E,  
13210, 14140, 14150, 14170, 14180, 14200, 14220 E

**RCH 5349 SM**

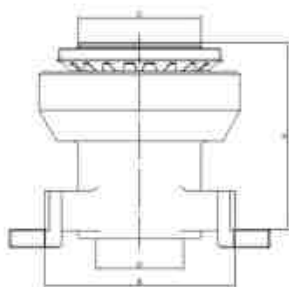


A - Altura / Height (mm) 107,0  
B - Largura para o garfo / Width Fork (mm) 124,0  
C - Diâmetro para mola membrana / Diameter of spring membrane (mm) 80,0  
D - Diâmetro Furo / Hole diameter (mm) 44,50

SACHS 3346  
NWO RDL 1349  
E 3HN 7580 AA

BETA BUS 16.180  
APPLICATION GEARSHIFT  
APPLICATION SET KTA 5101

**RCH 5350**

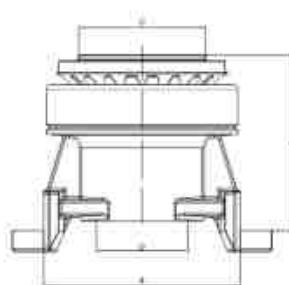


A - Altura / Height (mm) 118,30  
B - Largura para o garfo / Width Fork (mm) 124,0  
C - Diâmetro para mola membrana / Diameter of spring membrane (mm) 80,0  
D - Diâmetro Furo / Hole diameter (mm) 57,50

NWO RDL 1350  
2TB141.165, 2RP 141.037 C, LUK 500.089.10  
REF 137.0002-10

PLATEAU 365 mm GEARSHIFT LUK PULL CLUTCH  
TRUCK VW 12-170, 14-150, 14-170, 14-180, 14-190,  
14-200, 15-180, 15-190, 16-170, 16-180, 16-220 ALL  
UNTIL 220 CV  
BUS 16-180, 16-210, 17-210 OD TO PLATEAU LUK 365MM  
V.W TITAN 18-310, 23-310, TRACTOR 16-210 CD, 17-210 FOT,  
17-310 OT, 18-320 FOT, WARKER 14-210, 14-220, 16-220, 16-300  
17-210, 17-220, 17-310, 23-210, 23-220, 23-310, 24-220, 24-250,  
26-220, 26-260, 26-300, 31-320, 40-300  
APPLICATION SET KTA 5101

**RCH 5360 AC**

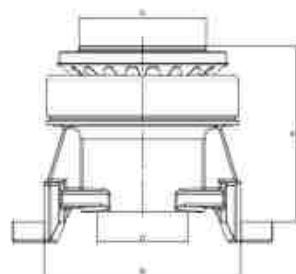


A - Altura / Height (mm) 112,0  
B - Largura para o garfo / Width Fork (mm) 124,0  
C - Diâmetro para mola membrana / Diameter of spring membrane (mm) 80,0  
D - Diâmetro Furo / Hole diameter (mm) 57,50

SACHS 3359  
NWO RDL 1360 AC  
2RP 141.037 C

PLATEAU 350 / 380 / 395 mm AUTO CENTER PULL  
CLUTCH GEARSHIFT  
TRUCK AND BUS VW 12-170, 12-180, 13-180, 13-170, 13-190,  
14-150, 14-170, 14-180, 14-190, 16-800, 16-200, 26-260, 31-260 E,  
WORKER 14-210, 14-220, 16-220, 16-300, 17-210, 17-220, 17-250,  
17-310, 23-210, 23-220, 23-310 TITAN, 17-210 FOD, 16-210 CD,  
17-310 OT, 17-260, 18-320 FOT, 18-310 TITAN TRACTOR, 26-310  
TITAN(6X4), 15-180, 15-190, 17-260, 18-320 FOT  
APPLICATION SET KTA 5101

**RCH 5360**

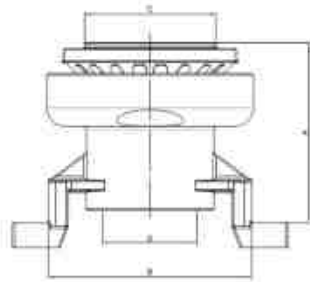


A - Altura / Height (mm) 112,0  
B - Largura para o garfo / Width Fork (mm) 124,0  
C - Diâmetro para mola membrana / Diameter of spring membrane (mm) 80,0  
D - Diâmetro Furo / Hole diameter (mm) 44,50

SACHS 3359  
NWO RDL 1360  
2RP 141.037 C

PLATEAU 350 / 380 mm GEARSHIFT PULL CLUTCH  
TRUCK AND BUS VW 12-170, 12-180, 13-180, 13-170, 13-190,  
14-150, 14-170, 14-180, 14-190, 16-800, 16-200, 26-260, 31-260 E,  
WORKER 14-210, 14-220, 16-220, 16-300, 17-210, 17-220, 17-250,  
17-310, 23-210, 23-220, 23-310 TITAN, 17-210 FOD, 16-210 CD,  
17-310 OT, 17-260, 18-320 FOT, 18-310 TITAN TRACTOR, 26-310  
TITAN(6X4), 15-180, 15-190, 17-260, 18-320 FOT  
APPLICATION SET KTA 5101

**RCH 5360 SM**

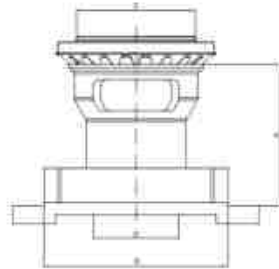


A - Altura / Height (mm) 112,0  
 B - Largura para o garfo / Width Fork (mm) 124,0  
 C - Diâmetro para mola membrana / Diameter of spring membrane (mm) 80,0  
 D - Diâmetro Furo / Hole diameter (mm) 57,50

SACHS 3348  
 NWO RDL 1360 SM  
 ZZO 141.707 A

PLATEAU 350 / 380 mm PULL CLUTCH  
 TRUCK AND BUS VW 12-170, 14-170, 14-200, 16-180 ALL,  
 VW 16-170, 16-200 APO5 06/97 14-210, 14-220, 16-210, 16-220, 16-300,  
 17-210, 17-220, 17-310, 23-310, 24-220, 24-250, 26-220 TITAN, 18-310 35-300  
 TITAN TRACTOR, 24-250, 26-300, 26-310, 40-300( 4X2, 6X4 ) TITAN  
 31260, 31260 E  
 APPLICATION SET KTA 5101

**RCH 5363 SM**

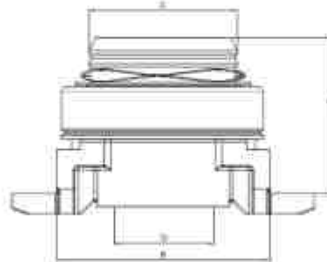


A - Altura / Height (mm) 94,50  
 B - Largura para o garfo / Width Fork (mm) 124,0  
 C - Diâmetro para mola membrana / Diameter of spring membrane (mm) 80,0  
 D - Diâmetro Furo / Hole diameter (mm) 44,50

NWO RDL 1363  
 2RP 141.037 B

GEARSHIFT PLATEAU 385 LUK PULL CLUTCH  
 VW 12-170, 14-150, 14-200, 16-170, 16-180, 16-200  
 ALL TILL 220 CV BUS 16-180, 16-210, 17-210 OD  
 BUS 16180, 16210, 17210 OD  
 APPLICATION SET KTA 5101

**RCH 5366 AC**

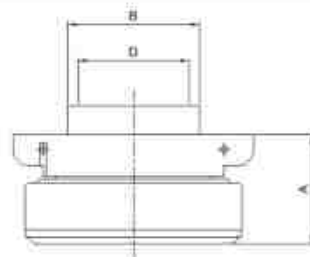


A - Altura / Height (mm) 91,50  
 B - Largura para o garfo / Width Fork (mm) 127,80  
 C - Diâmetro para mola membrana / Diameter of spring membrane (mm) 90,0  
 D - Diâmetro Furo / Hole diameter (mm) 60,60

SACHS 3396  
 NWO RDL 1366  
 EATON 125710  
 2T2 141.165 A  
 2T2 141.165 J  
 M82 141.165 A

PLATEAU 430 mm COUPLING PULL CLUTCH  
 CONSTELLATION 17-320, 19-320, 19-340, 19-360, 19-370,  
 19-380 E, 19-240 E, 19-420 E, 24-220, 24-320, 24-250, 25-320,  
 25-320 E, 25-340 E, 25-360 E, 25-370 E, 25-380 E, 25-420 E,  
 26-360 E, 31-320 E, 31-330, 31-340 E, 31-370 E, 31-370, 31-380 E,  
 31-390, TITAN  
 TRACTOR 19-320 CX ZF 16S 1650, 16S 1685 TD  
 APPLICATION SET KTA 5106

**RCH 5380**

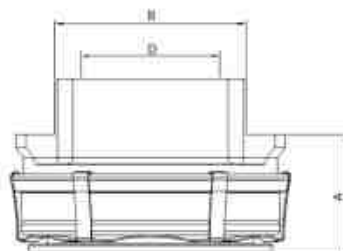


A - Altura / Height (mm) 37,30  
 B - Largura para o garfo / Width Fork (mm) 49,8  
 D - Diâmetro Furo / Hole diameter (mm) 44,50

SACHS 3371  
 NWO RDL 1380  
 357.607  
 O 2.991.380  
 2RO 141.211

PLATEAU 280 mm PULL CLUTCH  
 6.80, 6.90, 6.90 P, 6.90 S, 7.90 S, 7.95 S, 7.100, 7.110 S,  
 6800, 6900, 7900, 7905, 7993  
 MWM 2294 PERKINS 4236

**RCH 5398**

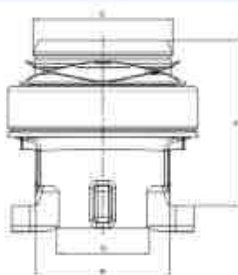


A - Altura / Height (mm) 46,0  
 B - Largura para o garfo / Width Fork (mm) 74,80  
 D - Diâmetro Furo / Hole diameter (mm) 57,50

2 T2 141.165 H

PLATEAU 395 mm PULL CLUTCH  
 13180, 15180, 17250, 24250 E, CONSTELLATION

### RCH 5498 AC

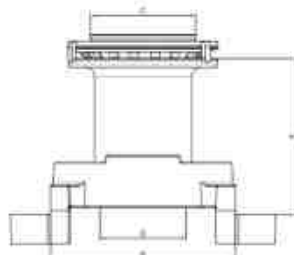


A - Altura / Height (mm) 104,50  
 B - Largura para o garfo / Width Fork (mm) 85,50  
 C - Diâmetro para mola membrana / Diameter of spring membrane (mm) 90,0  
 D - Diâmetro Furo / Hole diameter (mm) 63,20

SACHS 3398  
 EATON 125944  
 ZU2141165 B

PLATEAU 1596 COUPLING 430 mm PULL CLUTCH  
 TRUCK V.W CONSTELLATION 17330, 19330, 19390,  
 19400, 24339, 25330, 25400, 31330, 31390, 31400,  
 OVER 2012 (ALL)  
 MOTOR CI CUMMINS ISL 9 EURO V  
 MAN TGX 28440, 29440, 33440 MAN 440TX  
 26440 GEARSHIFT ZF 2012 ...  
 SET SACHS 6168  
 APPLICATION SET KTA 5106

### RCH 5562 SM

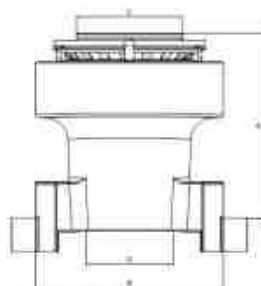


A - Altura / Height (mm) 103,50  
 B - Largura para o garfo / Width Fork (mm) 123,60  
 C - Diâmetro para mola membrana / Diameter of spring membrane (mm) 70,0  
 D - Diâmetro Furo / Hole diameter (mm) 44,5

EATON 125562

PLATEAU 365 mm GEARSHIFT PULL CLUTCH  
 VW 12-170, 12-180, 13-150, 13-170, 13-180 WORKER, 13-190,  
 14-150, 14-170, 14-180, 14-190, 14-200, 14-210, 14-220, 15-170,  
 15-180 WORKER, 15-190, 16-170, 16-180, 16-200, 16-210, 16-220,  
 17-210, 17-220, 23-210, 23-220, 24-220 6X2, BUS 16-180,  
 16-210, 17-210, 17-240  
 APPLICATION SET KTA 5105

### RCH 5563

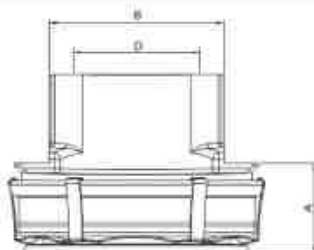


A - Altura / Height (mm) 121,0  
 B - Largura para o garfo / Width Fork (mm) 123,60  
 C - Diâmetro para mola membrana / Diameter of spring membrane (mm) 70,0  
 D - Diâmetro Furo / Hole diameter (mm) 57,5

EATON 125563

PLATEAU 365 mm GEARSHIFT PULL CLUTCH  
 VW 12-170, 12-180, 13-150, 13-170, 13-180 WORKER, 13-190, 14-150,  
 14-170, 14-180, 14-190, 14-200, 14-210, 14-220, 15-170, 15-180  
 WORKER, 15-190, 16-170, 16-180, 16-200, 16-210, 16-220, 17-210,  
 17-220, 23-210, 23-220, 24-220 6X2, BUS 16-180, 16-210, 17-210,  
 17-240, 23210, 23220  
 APPLICATION SET KTA 5105

### RCH 5565

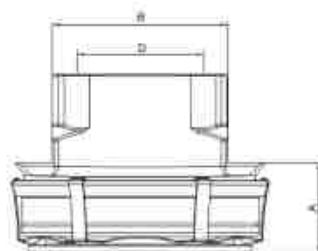


A - Altura / Height (mm) 37,0  
 B - Largura para o garfo / Width Fork (mm) 74,80  
 D - Diâmetro Furo / Hole diameter (mm) 57,50

EATON 125655  
 2T2 141 165-K

PLATEAU SACHS 395 mm PULL CLUTCH  
 BUS 17-230, 17-260 GEARSHIFT ZF AS 1010 BO AS TRONIC  
 (MECHANIC) 17260 - E0T/68D, 19-320  
 FROM 2010  
 SET SACHS 6414  
 APPLICATION ROLLED FORK

### RCH 5566



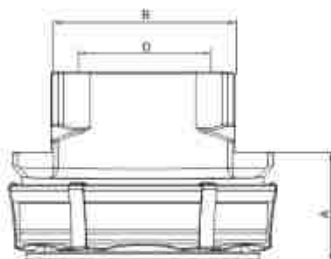
A - Altura / Height (mm) 37,0  
 B - Largura para o garfo / Width Fork (mm) 74,80  
 D - Diâmetro Furo / Hole diameter (mm) 57,50

SACHS 3344  
 EATON 125916

PLATEAU SACHS 395 mm ROLLED FORK  
 PUSH CLUTCH  
 BUS VW 15-190, 17-230, 17-230 EOD, 17-260 EOD  
 GEARSHIFT ZF NEW, 17-190 (MOTOR MAN), 17-260 EOT,  
 MWM ACTON 6.12  
 TCAE, (AUTOMATIC) 65 1010



### RCH 5597

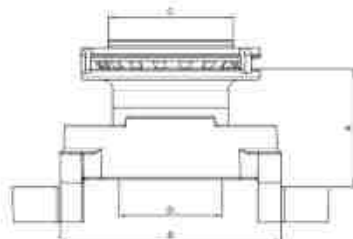


A - Altura / Height (mm) 46,0  
B - Largura para o garfo / Width Fork (mm) 74,80  
D - Diâmetro Furo / Hole diameter (mm) 57,50

SACHS 3397  
NWO RDL 1427  
EATON 125793  
2T2 141.165 E, 2T2 141.165 H

PLATEAU 362 / 395 mm PULL CLUTCH  
CONSTELLATION 13-180 E, 15-180 E, 17-250, 17-260 E,  
VW 13-180, 15-180 E  
CONSTELLATION MWM 17-250, 23-260, 24-250 6X2,  
24-260 E, 26-280, 31-280 EURO 5  
CONSTELLATION CUMMINS 17-250 E,  
17-190 MOTOR MAN / 17-280 E MAN ...2012

### RCH 5650 SM

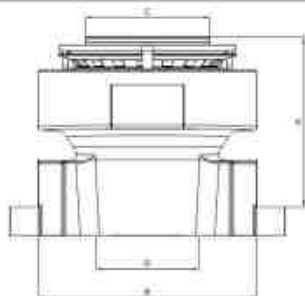


A - Altura / Height (mm) 66,0  
B - Largura para o garfo / Width Fork (mm) 123,80  
C - Diâmetro para mola membrana / Diameter of spring membrane (mm) 70,0  
D - Diâmetro Furo / Hole diameter (mm) 44,5

EATON 125650

PLATEAU 365 mm PUSH CLUTCH DOUBLE  
VW 16-300, 17-250, 17-300, 17-310, 18-310, 23-310, 24-220 6X4,  
24-250, 26-220, 26-260, 26-260 E, 26-300, 31-260, 31-310, 35-300,  
35-300 H, 40-300  
APPLICATION SET KTA 5105

### RCH 5716

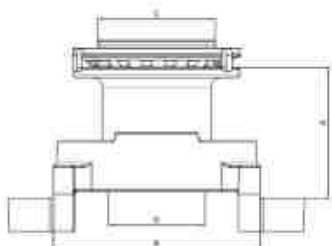


A - Altura / Height (mm) 95,50  
B - Largura para o garfo / Width Fork (mm) 123,80  
C - Diâmetro para mola membrana / Diameter of spring membrane (mm) 70,0  
D - Diâmetro Furo / Hole diameter (mm) 57,5

EATON 125716  
NWO RDL 1362  
2RP 141037 C, 40-30026.260 E

PLATEAU 395 mm GEARSHIFT PULL CLUTCH  
VW 16-200, 16-300, 16-600, 17-250, 17-260, 17-300, 17-310, 18-310,  
23-310, 24-220 6X4, 24-250, 26-200, 26-260, 26-260 E, 26-300,  
31-260, 31-310, 35-300, 35-300 H, CONSTELLATION 6X4  
MWM 2008, BUS 18-310 OT, TRACTOR 26-310,  
WARKER 14-210, 14-220, 16-220, 17-210, 17-220, 17-310, 23-210,  
23-220, 23-310, 24-220, 24-250, 26-220,  
12-170, 12-180, 13-170, 13-180, 13-190, 14-150, 14-170, 14-190  
EATON 15-180, 15-190, 16-170  
APPLICATION SET KTA 5105

### RCH 5717 SM

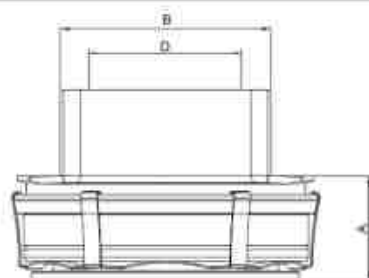


A - Altura / Height (mm) 78,0  
B - Largura para o garfo / Width Fork (mm) 123,80  
C - Diâmetro para mola membrana / Diameter of spring membrane (mm) 70,0  
D - Diâmetro Furo / Hole diameter (mm) 44,5

EATON 125717

PLATEAU 395 mm GEARSHIFT PULL CLUTCH  
VW 16-300, 17-250, 17-300, 17-310, 18-310, 23-310, 24-220 6X4,  
24-250, 26-220, 26-260, 26-260 E, 26-300, 31-260, 31-310, 35-300,  
35-300 H, 40-300  
APPLICATION SET KTA 5105

### RCH 5739



A - Altura / Height (mm) 37,0  
B - Largura para o garfo / Width Fork (mm) 74,80  
D - Diâmetro Furo / Hole diameter (mm) 57,50

SACHS 3739  
2T2140165 - K  
APPLICATION SACHS 6251 - 6259 - 6758 - 6174  
PLATEAU 395mm PUSH CLUTCH  
BOX ZF 1010BO > 2012  
BOX ZF ASTRONIC 17280 AM  
BOX ZF 6S-1010BO > 2012  
V.W. BUS 15190OD MAN 462  
17230 AMT 17230 OD - 17280 E  
CONSTELLATION 24280 - E > 2012  
BOX ZF 9S 1110 TD MAN 6.9L / 4.6L  
MWM EURO III 7.2L  
APPLICATION ROLLED FORK

# AGRALE

## CLUTCH FORK

### TECHNICAL DRAWING

### REFERENCE/APPLICATION



GDL 350.05

EATON 997078

FORK EATON  
PLATEAU SACHS 380 mm  
PLATEAU EATON 365 MM  
NO ROLLED (FIX)

EXG 351



EXG 352



TJG 141.865

SHORT SHAFT OF CLUTCH APPLICATED IN THE FORK  
GDL 350.05

TJG 141.863

LONG SHAFT OF CLUTCH APPLICATED TO THE FORK  
GDL 350.05

# FORD

## HORQUILLAS DE EMBRAGUE

### REFERENCE/APPLICATION



GDL 350.05

TJG 141.861  
2RP 141.861 A  
EATON 997078

FORK EATON PLATEAU SACHS  
350 / 380 / 395 mm  
PLATEAU EATON 365 / 395 mm  
NO ROLLED (FIX)

VW 14150 / 14200 / 14220 / 16170 / 16220  
24220 / 24250

EXG 351



EXG 352



TJG 141.865

SHORT SHAFT OF CLUTCH APPLICATED TO THE FORK  
GDL 350.05  
CARGO 1215, 1415, 1419, 1422, 1617  
BUS B 1618, B 1622, B 2322

TJG 141.863

LONG SHAFT OF CLUTCH APPLICATED TO THE FORK  
GDL 350.05  
CARGO 1215, 1415, 1419, 1422, 1617  
BUS B 1618, B 1622, B 2322



GDL 350.7

TEG 141.857  
EATON

F 1000, F 2000, F 4000, F 11000,  
F 22000  
(WITHOUT PIN)  
CARGO 814 / 815



GDL 350.13

BE 2Y 7515 A

F 1000, F 4000 HASTE LONG 308 MM

# FIAT

## CLUTCH FORK

### REFERENCE/APPLICATION



GDL 350.29

EATON 125.737  
BH1X 75 44 BA

FORD 1722 / 1723 / 2422 / 2423 /  
2428 / 2429  
APPLICATION BOX EATON 9M  
ES11 209



GDL 350.32

EATON 125.596  
BA1X 7544 AA

FORD 1317 / 1319 / 1419 / 1517 /  
1519 / 1717 / 1719  
APPLICATION BOX EATON 6M FS 5406 A

GDL 350.24



1489891080

DUCATO JTD / BOXER / JUMPER ( 10... )

# HYUNDAI

## CLUTCH FORK

### REFERENCE/APPLICATION

GDL 350.16



4144344001

H 100

# MITSUBISHI

## CLUTCH FORK

### REFERENCE/APPLICATION

GDL 350.16



4144344001

L 200, L300

**GDL 350.06**



EATON 997160 125731 125743  
88HU 7541 AA  
BG1X 7544 AA  
E7HT 541 AA  
2RM 141.861

ROLLED FORK  
PLATEAU SACHS 380 mm  
PLATEAU EATON 365 mm  
WITH SMALLER ROLLED 19 mm  
V.W 12170 BT / 12180 / 14150 / 14170 BT /  
14180 / 14220 / 16170 / 16220 / 16300 / 24220 /  
24250 / 35300

**KTG 350.06 A**



**EXG 351**



**EXG 352**



SET WITH 2 SLIDING BUSHINGS  
02 SLIDING PINS  
APPLICATED TO FORK GDL 350.06  
SMALLER ROLLED 19 mm

**TJG 141.865**

SHOT SHAFT OF CLUTCH APPLICATED TO THE FORK  
GDL 350.06

**TJG 141.863 2TC 141.863**

LONG SHAFT OF CLUTCH APPLICATED TO THE FORK  
GDL 350.06



**GDL 350.08**

09.302.935  
EATON

D 11000, D 12000, D 14000, D 22000  
FROM 1985 MODERN



**GDL 350.09**

00.839.239  
EATON

A 60, C 60, D 60, D 70  
TILL 1984

**GDL 350.10**



007.363.694  
EATON

A 10, A 14 - C 10, C 14 - D 10, D 20, D 40

**GDL 350.06**



EATON 997160  
997152, 125743, 125731  
IVECO 503101155

PLATEAU SACHS 350 mm, 380 mm  
SMALLER ROLLED 19 mm

**KTG 350.06 A**



**EXG 351**



**EXG 352**



SET WITH 02 SLIDING PINS, 02 SLIDING BUSHINGS  
SMALLER ROLLED 19 mm  
APPLICATION FORK GDL 350.06

**TJG 141.865**

SHORT SHAFT OF CLUTCH APPLICATED TO THE FORK  
GDL 350.06

**TJG 141.863 2TC 141.863**

LONG SHAFT OF CLUTCH APPLICATED TO THE FORK  
GDL 350.06

**GDL 350.01**



**327.250.1213**

MBB LPO 1111, 1113 LONG CLUTCH FORK

**GDL 350.02**



**352.250.0113**

MBB OM 352, OM OM 352 A, OM 362, 1313, 1513, 2213, 2215, CLUTCH FORK

**GDL 350.03**



**381.254.0208**

MBB OF 364, OM 366, L - 1318, 1518, 2318 HORQUILLA DE EMBRAGUE

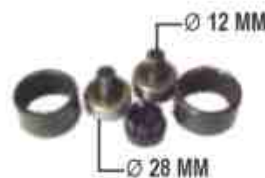
**GDL 350.04**



**970.254.0308  
970.254.0408  
970.254.0508**

MBB MOTOR ELETRONIC GEARSHIT G85  
6 MARCH E G 60  
L1417 1725 ATEGO ELECTRONIC  
APPLICATED SHAFT EXG 356

**KTG 350.04 A**



**000 254 0017**

SET WITH 01 SPHERICAL BUSHING  
02 NYLON BUSHINGS, 02 INTERNAL RINGS  
02 EXTERNAL RINGS  
MBB OH 1625 1628  
APPLICATED TO THE FORK  
GDL (350.04)

**EXG 356**



**679.254.0106  
697.254.0106**

SHAFT OF CLUTCH FORK  
MBB OH 1625, OH 1628,  
LS 1929, 1932, 1933, 1934, 1935, 1941  
APPLICATED TO THE GDL (350.04)

**GDL 350.11**



**386.250.0013**

HPN 1521 - 1618 - 1620 - 1621 - 1723  
OF 1417 1721 1722  
APPLICATED SHAFT EXG 355  
BUS MBB

**KTG 350.11 A**



**382.250.0113**

SET WITH: 02 BUSHINGS OF NYLON,  
01 SPHERICAL BUSHING  
APPLICATED TO THE FORK GDL (350.11)

**EXG 355**



**386.254.0006**

SHAFT OF CLUTCH FORK MBB OF 1618,  
1620, 2630  
L 1218, 1418, 1521, 1620, 1621  
APPLICATION FORK GDL 350.11

**GDL 350.12**

**388.250.0513**

MBB OH 1625 L, OH 1628 HL, LS 1929,  
LS 1935, LS 1941  
APPLICATED SHAFT EXG 353 / 354



**EXG 353**



**388.254.0006**

SHORT SHAFT OF CLUTCH FORK MBB LS 1935,  
1941, OH 1625 L, OH 1628 L  
APPLICATED TO THE FORK GDL (350.12)

**KTG 350.12 A**



SET WITH 01 SPHERICAL BUSHING, 02 BUSHING NYLON  
2 INTERNAL RINGS, 02 EXTERNAL RINGS  
WITH SMALLER BUSHING APPLICATED TO FORK GDL (350.12)  
(388.250.0513)

**EXG 354**



**388.254.0106**

LONG SHAFT OF CLUTCH MBB LS  
1935, 1941, 2635  
APPLICATED TO THE FORK GDL (350.12)

**GDL 350.19**

**655.254.0708**  
**655.250.1513**

AXOR G 210, G 211, G 240, LS 1938,  
1938 S, 1944, 2544, 2638, 2640, 2644,  
2726, 2729  
APPLICATED SHAFT EXG 357  
(BI DISC AND MONO DISC)



**KTG 350.19 A**



SET WITH: 01 SPHERICAL BUSHING, 02 BUSHINGS OF NYLON,  
2 INTERNAL RINGS, 02 EXTERNAL RINGS WITH BIGGER  
BUSHING APPLICATION TO THE FORK GDL (350.19)

**EXG 357**



**655.254.0206**

SHAFT OF CLUTCH FORK  
MBB AXOR 1933 / 1944 / 2035 / 2040 / 2044  
2533 / 2544 / 2638 / 2640 / 2644 / 2726 / 2729  
APPLICATED TO THE FORK GDL (350.19)

**KTG 350.19 B**



SET OF WASHERS AND LOCKERS  
APPLICATED IN THE SHAFT EXG - 357

### GCL 423.01



344.260.0130  
321.260.2630

TRIGGER FORK 2ª AND 3ª MARCH GEARSHIFT MBB  
OLD G-3.36 AND G-3.40  
L-1113, 1313, 1513, 2013, 2213  
SUPPORT MOVILE (STEEL)

### GCL 445.02



321.260.2730

TRIGGER FORK 4ª AND 5ª MARCH GEARSHIFT  
MBB OLD G-3.36 AND G-3.40  
L-1113, 1313, 1513, 2013, 2213  
SUPPORT MOVILE (STEEL)

### GCL 445.04



302.265.0702  
384.265.0402

TRIGGER FORK 4ª AND 5ª MARCH  
GEARSHIFT MBB  
MODERN G-3.50 AND G-3.60  
L-1214, 1418, 1618, O-370, O-371  
SUPPORT MOVILE (STEEL)

### GCL 423.03



302.265.0602

TRIGGER FORK 2ª AND 3ª MARCH  
GEARSHIFT MBB  
MODERN G-3.50 AND G-3.60  
L-1214, 1418, 1618, O-370, O-371  
SUPPORT MOVILE (STEEL)

# MBB

## GEARSHIFT FORK FIXED

## REFERENCE/APLICACION

### PGC 400.00



384.265.0049

SLIDING PIN APPLICATED TO ALL MODELS  
OF GEARSHIFT FORKS MZK  
PACK (STEEL)

### GCL 523.01



344.260.0130  
321.260.2630

TRIGGER FORK 2ª AND 3ª MARCH GEARSHIFT  
MBB OLD G-3.36 E G-3.40  
L-1113, 1313, 1513, 2013, 2213  
SUPPORT FIXED

### GCL 523.03



302.265.0602  
384.265.0602

TRIGGER FORK 2ª AND 3ª MARCH  
GEARSHIFT MBB  
MODERN G-3.50 Y G-3.60  
L-1318, 2218, 1214, 1418, 1618, O-370, O-371  
SUPPORT FIXED

### GCL 545.02



321.260.2730

TRIGGER FORK 4ª AND 5ª MARCH  
GEARSHIFT MBB  
OLD G-3 - 36 - 40 MBB L-1113, 1313, 1513,  
2013, 2213  
SUPPORT FIXED

### GCL 545.04



302.265.0702  
384.265.0402

TRIGGER FORK 4ª AND 5ª MARCH GEARSHIFT  
MBB MODERN G-3 - 50 - 60  
L-1214, 1418, 1618, O-370, O-371  
SUPPORT FIXED

### GCL 401 R



345.260.0130  
383.260.0730

TRIGGER FORK 1ª AND REVERSE  
GEARSHIT MBB G-3.50 E G-3.60  
SUPPORT FIXED

# SCANIA

## CLUTCH BEARING

### REFERENCE/APPLICATION



**GDL 350.27**  
 CLUTCH FORK COMPLETE  
 SCANIA (WITH SHAFT) SERIE 4  
 ORIGINAL NUMBER 1479577 / 1479578  
 1543645 / 173306  
 APPLICATION SET KTG 350.17-A

**KTG 350.27 B**  
 SET SHAFT OF THE FORK  
 APPLICATION FORK  
 GDL 350.27



**KTG 350.17 A** 1753479 / 1335485  
 SET CLUTCH FORK REPAIR  
 APPLICATED TO THE FORK GDL 350.27  
 APPLICATION GEARSHIFT 6 / 8 / 10 MARCH



# VOLVO

## CLUTCH FORK, SHAFT AND SETS

### REFERENCE/APPLICATION

**GDL 350.14**



**EATON 125743**  
 125.731  
 2133.3869

ROLLED FORK REINFORCED VOLVO  
 PLATEAU SACHS 365/380mm, PLATEAU EATON 395mm  
 WITH BIGGER ROLLER 24,95 mm  
 APPLICATED TRANSMISSION FS-6203 AND 6306

**KTG 350.14 A**



SET WITH 02 SLIDING PINS AND 02 SLIDING BUSHINGS  
 SMALLER ROLLED 19mm  
 APPLICATION TO THE FORK GDL 350.14

**EXG 351**



**TJG 141.865**

SHORT CLUTCH SHAFT APPLICATED TO THE FORK  
 GDL 350.14

**EXG 352**



**TJG 141.863 2TC 141.863**

LONG CLUTCH SHAFT APPLICATED TO THE FORK  
 GDL 350.14

# VOLKSWAGEN

## CLUTCH FORK, SHAFTS, SETS

### REFERENCE/APPLICATION

**EATON 997078**  
 2RP141.861 A  
 TJG 141.861 A  
 TF3 141.861  
 BGIX 7544 A  
 2RM 141.861

**GDL 350.05**



14150, 14200, 14250, 16170,  
 16180 CO, 16210, 16220,  
 16300, 17210 OD, 24220, 24250  
 BUS 16180, 16210  
 NO ROLLED (FIXED)

**EXG 351**



**TJG 141.865**

SHORT CLUTCH SHAFT APPLICATED TO THE FORK  
 GDL 350.05

**EXG 352**



**TJG 141.863 2TC 141.863**

LONG CLUTCH SHAFT APPLICATED TO THE FORK  
 GDL 350.05

**EATON 997152, 997160,**  
 125743, 125731  
 2S2 141.719 A, 2RM 141.861  
 88HU 754 AA, BGIX 7544 A  
 E7HT 7541 A

**GDL 350.06**



TRANSMISSION APPLICATED FS 6209 / 6306  
 SMALLER ROLLED 19 MM  
 VW BUS 12170 BT, 14170 BT  
 VW TRUCK 12180, 13170, 13180,  
 14150, 14180, 15170, 15180, 16170,  
 16220, 16300, 17210, 24220, 35300

**EXG 351**



**TJG 141.865**

SHORT CLUTCH SHAFT APPLICATED TO THE FORK  
 GDL 350.06

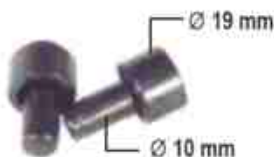
**EXG 352**



**TJG 141.863 2TC 141.863**

LONG CLUTCH SHAFT APPLICATED TO THE FORK  
 GDL 350.06

**KTG 350.06 A**



SET WITH 02 SLIDING BUSHINGS, 02 SLIDING PINS  
 SMALLER ROLLED 19 MM  
 APPLICATED TO THE FORK GDL 350.06

**GDL 350.13**



2RO 141.719-A  
77TU 7515-A  
BE2Y 7515-A  
TPH 141.857

VW 7.90, 8.140, 9.150  
7-100, 8-120, 8-140, 8-150, 9-150, 12-140  
LONG STEM 308 mm  
DELIVERY 5.140 EOD, 9.150 EOD, 8.140 CO

**GDL 350.14**



**KTG 350.14 A**



SET WITH 02 SLIDING PINS AND 02 SLIDING  
SMALLER ROLLED 19 mm  
APPLICATED TO THE FORK GDL 350.14

**2S2 141.719 A**

EATON 125743  
125731

2 RM 141.861  
2S2 141.719 A  
2D2 141.719 A  
2S2 141.719 D

16170, 16220, 24220, 35300 COM MOTOR EURO 5  
14180, 14220, 17180, 17220, 17240, 24250  
(REINFORCED ROLLED CLUCH 24,95 mm)  
APPLICATED SHAFT EXG 351 - 352

**EXG 351**



**TJG 141.865**

SHORT CLUTCH SHAFT APPLICATED TO THE FORK  
GDL 350.14

**EXG 352**



**TJG 141.863 2TC 141.863**

LONG CLUTCH SHAFT APPLICATED TO THE FORK  
GDL 350.14

**GDL 350.15**

2WO 311.551



CLUTCH BEARING V.W BUS WITH MOTOR  
FRONT 15180 E OD, 15190 E OD, 17210 E OD  
NO ROLLED

**GDL 350.21**

2T2 141.719  
2T2 141.719 E  
2T2 141.719 D  
2T2 141.719 F  
ZF 6060 268 042

CLUTCH BEARING CONSTELLATION 13-180 E, 15-180 E  
17-240 E, 17-250 E, 17-280, 24-250 E, 24-280 WITH ROLLED V.W BUS CX ZF 9 S 1110 TD

**KTG 350.21 A**



**GDL 350.30**

VW BOX ZF 15180 OD, BUS  
NUMBER VW 2WO0311549  
NUMBER ZF 6060368057



**KTG 350.30 A**

SET REPAIR CLUTCH BEARINGS V.W.  
BUS 15.180 17.230-OD  
APPLICATED TO THE CLUTCH  
GDL (350.30)

**GDL 350.22**



2 T2 141.720  
EATON 125.699

CLUTCH BEARING CONSTELLATION EURO  
5, 13-190, 15-190, 17-190, 17-200 - WITH ROLLED  
APPLICATED TO THE TRANSMISSION  
FSB - 5406 / 6406

**KTG 350.22 A**



SET REPAIR CLUTCH BEARINGS V.W  
CONSTELLATION EURO 5 13-190, 15-190  
APPLICATED TO THE CLUTCH GDL (350.22)



**KTA 5101**



SET OF LOCKERS PLATEAU  
RING 4 TIPS 80mm  
SACHS 350/380 mm 04  
COMPONENTS  
(DISH SPRING, STEEL RINGS,  
FLAT WASHER, LOCKER RING)

APPLICATION (AGRALE, FORD, VOLVO, IVECO, VW)

**KTA 5102**



SET OF LOCKERS PLATEAU  
RING 6 TIPS 90mm  
SACHS 430mm 04 COMPONENTS  
(DISH SPRING, STEEL RINGS,  
(MUELLE PLATO, ANILLO DE  
FLAT WASHER, LOCKER RING)  
APPLICATION (SCANIA, VOLVO, MBB  
388055, 3192219, 000 252 0658

**KTA 5103**



SET OF LOCKERS PLATEAU  
VW LUK 80mm  
350/365/380mm

**KTA 5104**



SET OF LOCKERS PLATEAU  
70mm FLAT RING ASSEMBLED  
EATON 04  
COMPONENTS 365 / 395 mm

**KTA 5105**



SET OF LOCKERS PLATEAU  
70mm EATON 03 COMPONENTS  
ASSEMBLED ROUND RING  
365/395mm

**KTA 5106**



SET OF LOCKERS PLATEAU  
(CAT FACE)  
MBB 000 252 06 46  
SCANIA 1799126  
APPLICATED SYSTEM  
FAST COUPLING  
430mm

**KTA 5107**



SET OF LOCKERS PLATEAU  
MBB 709 / 712 / 809 / 812 / 814 /  
912 / 914  
000 252 00 48  
250 / 280 / 311mm

**KTA 5112**



SET OF LOCKERS PLATEAU  
APPLICATION VALEO SYSTEM  
MBB AXOR  
MBB - 1933 / 1938 / 1944  
2036 / 2038 / 2041 /  
OM - 447-LA  
OM - 906 - LA ELECTRONIC  
OM - 926 - LA ELECTRONIC

**KTA 5113**



SET OF LOCKERS PLATEAU  
VALEO SYSTEM  
SCANIA  
VOLVO  
IVECO  
805712  
1797669

**HOUSING EQUIVALENCE TABLE**

N/MZK	N/NWO	N/Sachs	N/Eaton	N/Original	Page
RCS-5007	RDS-1007	3358		000 254 00 20	17/25
RCL-5007	RDL-1007			900236301	25
RCS-5009	RDS-1009	3367		AL 2116	9/17/29
RCH-5010	RDL-1429		1271010		7/10
RCS-5015	RDS-1015			090.0602.021	9/24
RCS-5016	RDS-1016			3585431	10/17
RCS-5019	RDS-1009			6003.033.035.001	7/25
RCH-5020	RDC-1020	3384		320 250 00 15	18
RCS-5020	RDS-1020	3384		343 250 00 10	18
RCH-5021	RDL-1021	3385		304 250 03 15	18
RCS-5021	RDS-1021	3385		335 254 00 10	18
RCH-5029			1271029 / 1251040	F 81A7548AC	10
RCL-5035	RDS-1035	3367	125802	6003.033.035.001	7/10/14/29
RCL-5036	RDC-1036			94.609.464	14
RCL-5037	RDC-1037	3373		2SK 141165	11/29
RCL-5038	RDC-1038	3387	125801	2SL 141165	11
RCH-5040		3040	125919	2PO 141165	7/11/29

N/ MZK	N/ NWO	N/ Sachs	N/ Eaton	N/ Original	Página
RCL-5061	RDL-1061			93D2934	14
RCH-5200	RDL-1600			81781200	26
RCH-5300	RDL-1300	3358		321 250 05 15	18
RCH-5303	RDL-1303			6013.033.035.001	7
RCH-5305	RDL-1305	3324		002 250 46 15	19
RCH-5305-TB	RDL-1305	3324		002 250 46 15	19
RCH-5306	RDL-1306	3330		001 250 03 15	19
RCH-5307	RDL-1307	3327		000 250 19 15	19
RCH-5308	RDL-1308	3310		000 250 17 15	19
RCH-5308-TB	RDL-1308	3310		000 250 31 15	20
RCH-5311	RDL-1311	3329		000 250 76 15	20
RCH-5312	RDL-1312			340 250 13 12	20
RCH-5314-AC	RDL-1314	3353		1393163/1386160	24
RCH-5315	RDL-1315	3355		1655289/1669912	26
RCH-5316	RDL-1316	3368		267156/1527693	26
RCH-5317	RDL-1317	3374		1655287	26
RCH-5318	RDL-1318	3372		1655288	26
RCH-5319	RDL-1319	3060/3360		1672944/1655843	27
RCH-5320-AC	RDL-1320	3325	125807	71444597	15/20
RCH-5321-AC	RDL-1321	3345	125653	001 250 92 15	20
RCH-5322	RDL-1322	3386		1527695	27
RCH-5323	RDL-1323	3323	125800	T-13141151	9/15
RCH-5324-AC	RDL-1324	3383		001 250 07 15	21
RCH-5325	RDL-1325	3363	125637	1655825/1655732	27
RCH-5326	RDL-1326	3326		000 250 95 15	21
RCH-5328	RDL-1328			000 250 70 15	21
RCH-5329-AC	RDL-1329	3352	125708	1319 344/1407430	24
RCH-5331	RDL-1331			001 250 09 15	21
RCH-5332-AC	RDL-1332	3345	125653	001 250 05 15	21
RCH-5336-AC	RDL-1336	3366	125652	4210203 15	15
RCH-5337	RDL-1337	3337/3338		001 250 04 15	22
RCH-5338-AC	RDL-1338	3390		001 250 06 15	22
RCH-5347	RDL-1428	3347	125783	6020.0030.16005	8
RCH-5348-SM	RDL-1348	3358		2Z0141707-A	11
RCH-5349-SM	RDL 1349	3346		E3HN7580-AA	11/30
RCH-5350	RDL-1350			2RP 141037-C	12/30
RCH-5352	RDL-1352	3365		1668930/1668938	27
RCH-5356-AC	RDL-1356	3377	125634/125635	002 250 41 15	22
RCH-5360	RDL-1360	3359		2RP 141035-C	12/30
RCH-5360-AC	RDL-1360-AC	3359			8/12/15/27/30
RCH-5360-SM	RDL-1360-SM	3348	125562	2Z0141707-A1	12/31
RCH-5363-SM	RDL-1363			2RP141037-B	31
RCH-5365	RDL-1365	3389/3722	125790	6007.0030.48005	8
RCH-5366-AC	RDL-1366	3396	125710	2T2 141165A	31
RCH-5372	RDL-1372	3375/3075	125708	1367604/ 352750	24
RCH-5378-AC	RDL-1378	3388		001 250 06 15	22
RCH-5380	RDL-1380	3371		2RO 141211	31
RCH-5390-AC	RDL-1424	3390	125946	002 250 63 15	22
RCH-5391-AC		3391		50310133 15	16
RCH-5394	RDL-1394	3308	125643	1672964/20569161	28
RCH-5396-AC	RDL-1396		125641	20722523	28
RCH-5397-AC	RDL-1397	3309	125806	001 250 99 15	23
RCH-5398				2T141165-H	31
RCH-5498-AC		3398	125944	2U2141165-B	32
RCH-5399	RDL-1431	3399		6025.003.025.005	8/16
RCH-5400-AC		3400	125910	5949890688	8/16
RCH-5401		3401			16

N/ MZK	N/ NWO	N/ Sachs	N/ Eaton	N/ Original	Page
RCH-5422-AC	RDL-1422	3350	125709	1728165/1499770	24
RCH-5431-AC		3100/3431	125755/1251050	457548-AC	12
RCH-5498-AC		3398			17
RCH-5522-AC					25
RCH-5522					25
RCH-5529					13
RCH-5562-SM			125562		13/32
RCH-5563			125563/125715		9/13/15/28/32
RCH-5565			125655	2T2 141 165-K	32
RCH-5566		3344	125916		32
RCH-5567				Kit Sachs 6295	28
RCH-5597	RDL-1427	3397	125793	2T2141165-E	33
RCH-5635			125635		23
RCH-5650-SM			125650		13/33
RCH-5654			125654		23
RCH-5655			125655		28
RCH-5713			125713		13
RCH-5716			125716		14/29/33
RCH-5717-SM			125717		14/33
RCH-5722-AC				Valeo 830010	25
RCH-5739			3739		33

### ACTUATORS

RCY-7843	RDL-1375	3361		002 250 66 15	23
RCY-7844				002 254 25 08	23

### FORKS, SHAFT, CLUTCH SETS

GDL-350.01		327 250 12 13 36	36	GCL-523.03	302 265 06 01 38	38
GDL-350.02		352 250 01 13 36	36	GCL-545.02	321 260 2730 38	38
GDL-350.03		381 254 02 08 36	36	GCL-545.04	302 265 07 02 38	38
GDL-350.04		970 254 03 08 36	36	EXG-351	TJG 141865	34/35/39/40
GDL-350.05	997078		33/39	EXG-352	TJG 141863	34/35/39/40
GDL-350.06	997160		35/39	EXG-353	388 254 00 06	37
GDL-350.07		TEG-141857 34	34	EXG-354	388 254 01 06 37	37
GDL-350.08		09305935 35	35	EXG-355	386 254 00 06 36	36
GDL-350.09		00839239 35	35	EXG-356	679 254 01 06 36	36
GDL-350.10		007363694 35	35	EXG-357	655 254 02 06 37	37
GDL-350.11		386 250 00 13 36	36	KTG-350.04-A		36
GDL-350.12		388 250 05 13 37	37	KTG-350.06-A		35/39
GDL-350.13		BE2Y7515 A 34/40	34	KTG-350.11-A		36
GDL-350.14	125743		39/40	KTG-350.12-A		37
GDL-350.15		2WO 311551 40	40	KTG-350.14-A		39/40
GDL-350.16		4144344001 34	34	KTG-350.17-A		39
GDL-350.19		655 254 07 08 37	37	KTG-350.19-A		37
GDL-350.21		2T2 141719/E/D/F	40	KTG-350.19-B		37
GDL-350.22	125699	2T 2 141720 40	40	KTG-350.21-A		40
GDL-350.24		1489891080 33	34	KTG-350.22-A		40
GDL-350.27		173306 39	39	KTG-350.27-B		39
GDL-350.30			40	KTG-350.30-A		40
GDL-350.29	125737	BH1X744-BA 34	34	KTA-5101		41
GDL-350.32	125596	BA1X7544-AA 34	34	KTA-5102		41
PGC-400.00		384 265 00 49 38	38	KTA-5103		41
GCL-401.R		345 260 01 30 38	38	KTA-5104		41
GCL-423.01		344260 01 30 38	38	KTA-5105		41
GCL-423.03		302 265 0602 38	38	KTA-5106		41
GCL-445.02		321 260 27 30 38	38	KTA-5107		41
GCL-445.04		302 265 07 02 38	38	KTA-5112		41
GCL-523.01		344 260 01 30 38	38	KTA-5113		41



**AUTOMOTIVE INDUSTRY**

[www.mzkrolamentos.com.br](http://www.mzkrolamentos.com.br)

THE INDUSTRY MANUFACTURE CLUTCH HOUSINGS,  
SLIDING CUBES, SHAFT FOR CLUTCH FORK  
GEARSHIFT CLUTCH, CLUTCH FORKS, SETS FOR  
CLUTCH FORKS, SET LOCKERS FOR HOUSINGS, CLUTCH HOUSINGS  
UTILITY AND HEAVY LINE, FOLLOWING STRICT QUALITY STANDARDS.

## **QUALITY AND SERIOUSNESS**

Projects developed according  
to OEM Specification.

**ADDRESS:**

RUA CAMPINAS N° 2145 - VILA CARVALHO  
CEP: 14075-070 - RIBEIRÃO PRETO-SP - BRAZIL

Phone: +55 16 3969-8877

e-mail: [exportacao@mzkrolamentos.com.br](mailto:exportacao@mzkrolamentos.com.br)

